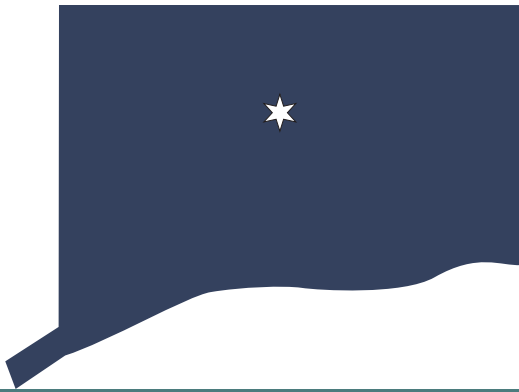


The 2008 Broad Prize for Urban Education



Hartford Public Schools Connecticut

PAGE	DATA
2	Background Information
3	Trends in Overall Reading and Mathematics Proficiency
4	Race/Ethnicity Trends in Reading Proficiency
5	Race/Ethnicity Trends in Mathematics Proficiency
6	Income Status Trends in Reading Proficiency
7	Income Status Trends in Mathematics Proficiency
8	Reading Proficiency Data Summary
9	Reading Proficiency Gaps
10	Mathematics Proficiency Data Summary
11	Mathematics Proficiency Gaps
12	Trends in Actual vs. Expected Performance for ALL STUDENTS
13	Standardized Residuals Data for Reading and Mathematics
14	High School Graduation Rates
15	College Readiness Data
16	Adequate Yearly Progress (AYP)
17	Methodology and Technical Notes

Hartford Public Schools

CONNECTICUT

Background Information

Description of district: 2003–2006

	2003	2004	2005	2006
District characteristics				
Locale ¹	2	2	2	2
Number of schools	38	40	41	42
Percent of schools serving a large city	0	0	0	0
Student characteristics				
Enrollment	22,734	22,578	22,296	21,954
District size rank ²	288	298	318	354
Percent low-income students ³	67	70	67	68
Percent non-white students	94	94	95	94
Percent of students by race/ethnicity				
African American	39	40	40	41
Asian	1	1	1	1
Hispanic	53	53	53	52
White	5	4	5	6
Other	0	0	0	0
Not reported	2	1	0	0
Percent English language learners	13	16	17	18
Percent students with disabilities	17	16	17	16
District expenditures				
Total expenditures per pupil	\$15,045	\$15,737	\$19,177	\$21,925
Instructional expenditures per pupil	\$8,604	\$9,184	\$9,800	\$9,723
State expenditures				
Total expenditures per pupil	\$11,057	\$11,436	\$12,263	\$13,072
Instructional expenditures per pupil	\$7,052	\$7,282	\$7,804	\$8,281

SOURCE: Analysis of data from the U.S. Department of Education, National Center for Education Statistics, Common Core of Data (CCD).

— Not available. † Data were suppressed due to unreliability. See methodology section.

¹ As defined by the Census Bureau, locale code 1 represents a large city; code 2 represents a mid-size city; code 3 represents the urban fringe of a large city; and code 4 represents the urban fringe of a mid-size city.

² District size rank is based on enrollment in local school districts in the 50 states and DC, and does not include other district types or territories.

³ Low-income students are eligible for Free or Reduced-Price School Lunch (FRSL).

NOTES: CCD data for 2007 were not available at time of analysis and are not included in this table.

State test information: 2004–2007

Subject/level	Most recent test included in analysis	Grades included in analysis			
		2004	2005	2006	2007
Reading					
Elementary	Connecticut Mastery Test (CMT)	4	4	3, 4, 5	3, 4, 5
Middle	Connecticut Mastery Test (CMT)	6, 8	6, 8	6, 7, 8	6, 7, 8
High	Connecticut Academic Performance Test (CAPT)	10	10	10	10
Mathematics					
Elementary	Connecticut Mastery Test (CMT)	4	4	3, 4, 5	3, 4, 5
Middle	Connecticut Mastery Test (CMT)	6, 8	6, 8	6, 7, 8	6, 7, 8
High	Connecticut Academic Performance Test (CAPT)	10	10	10	10

SOURCE: State education agency.

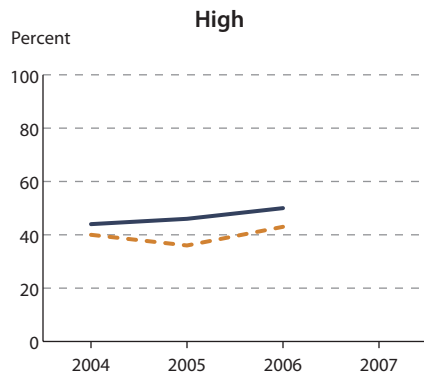
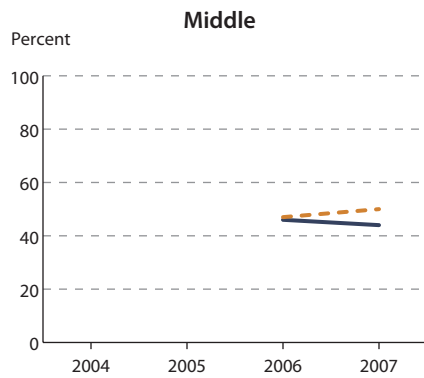
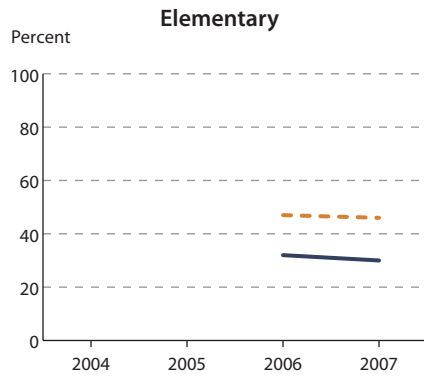
— Not available.

NOTES: **Italics** indicate tests were not comparable to other years. **Test standards changed in 2006** at the elementary and middle school levels; as a result, 2004 and 2005 proficiency results were not comparable to subsequent years. **The 2007 high school test** was not comparable to previous years.

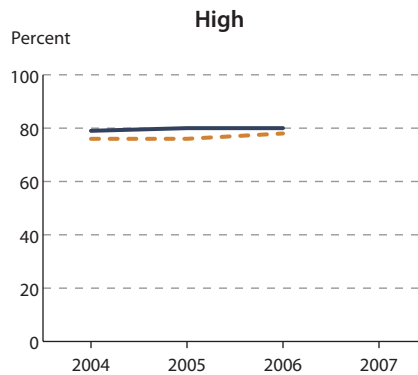
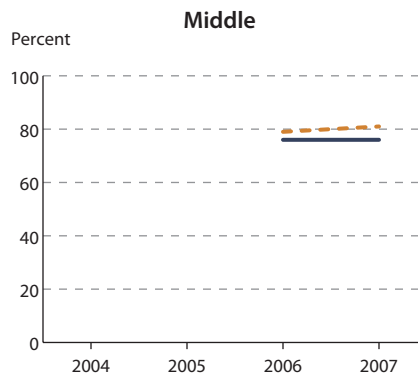
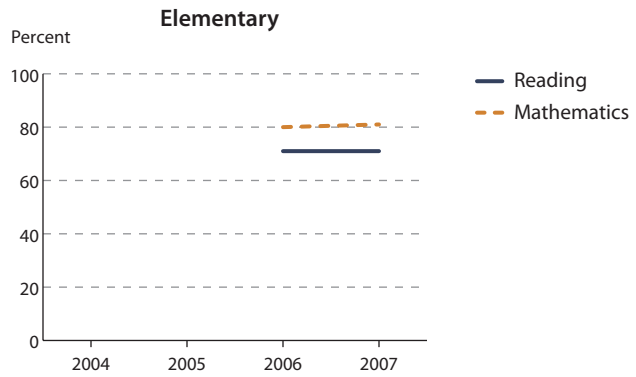
Trends in Overall Reading and Mathematics Proficiency

Percentage of all students in the district and the state scoring at or above proficient in reading and mathematics in elementary, middle, and high school: 2004–2007

DISTRICT PROFICIENCY RATE



STATE PROFICIENCY RATE



SOURCE: Analysis of state test data.

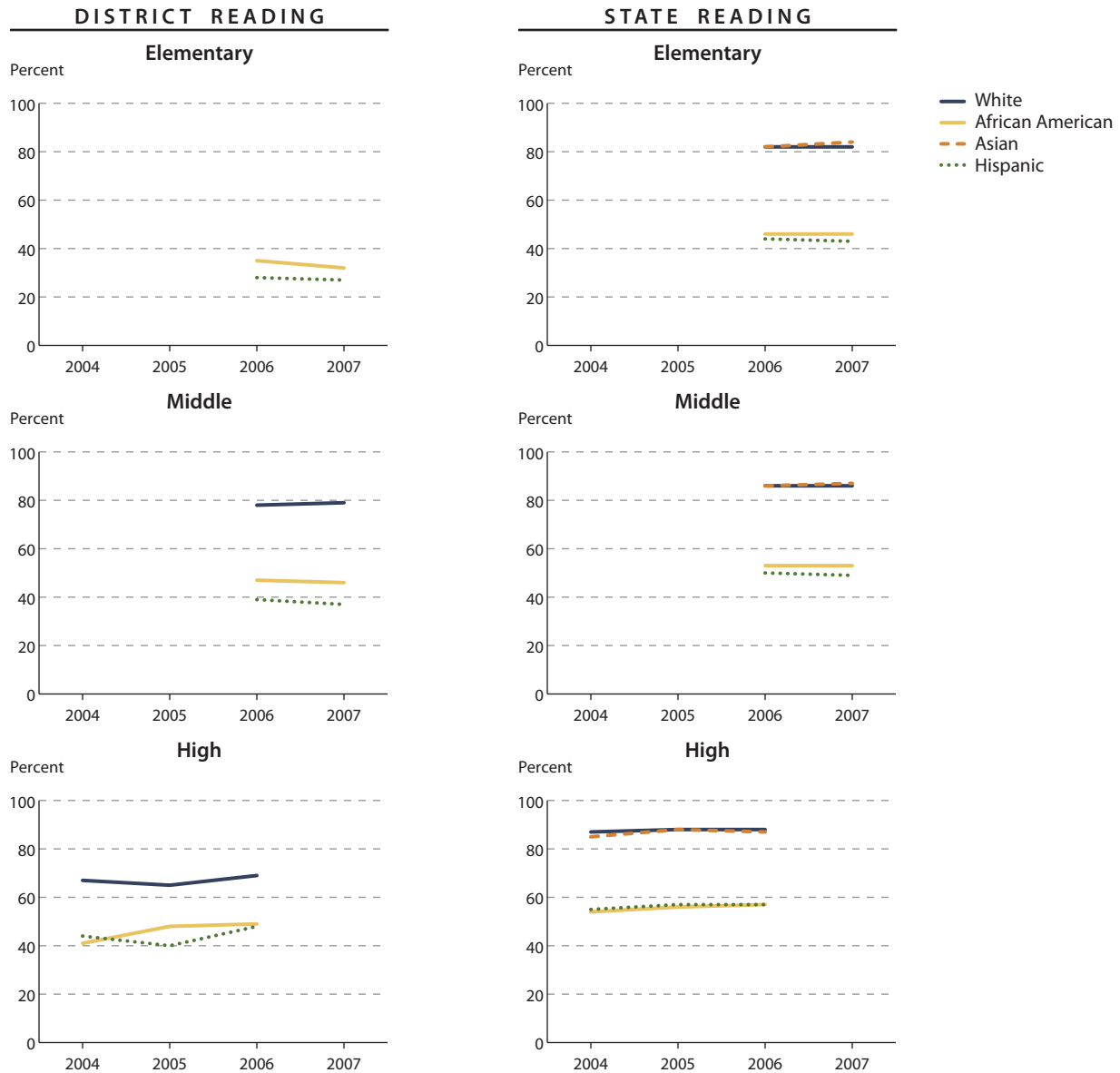
NOTES: See tables on pages 8 and 10 for details. Gaps in lines represent missing or noncomparable data.

Hartford Public Schools

CONNECTICUT

Race/Ethnicity Trends in Reading Proficiency

Percentage of students scoring at or above proficient in reading, by race/ethnicity, for the district and the state: 2004–2007

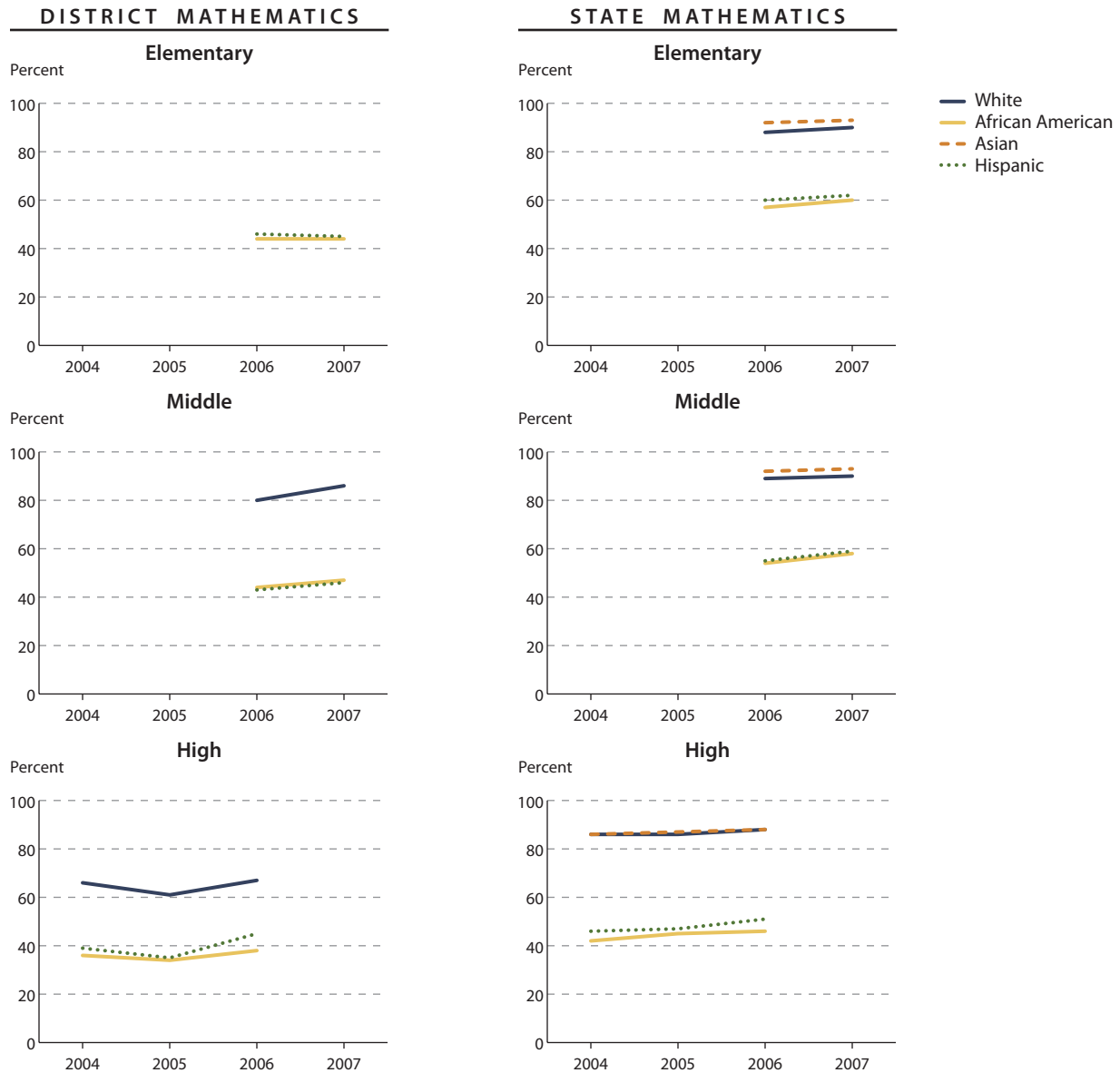


SOURCE: Analysis of state test data.

NOTES: See table on page 8 for details. Gaps in lines represent missing or noncomparable data.

Race/Ethnicity Trends in Mathematics Proficiency

Percentage of students scoring at or above proficient in mathematics, by race/ethnicity, for the district and the state: 2004–2007



SOURCE: Analysis of state test data.

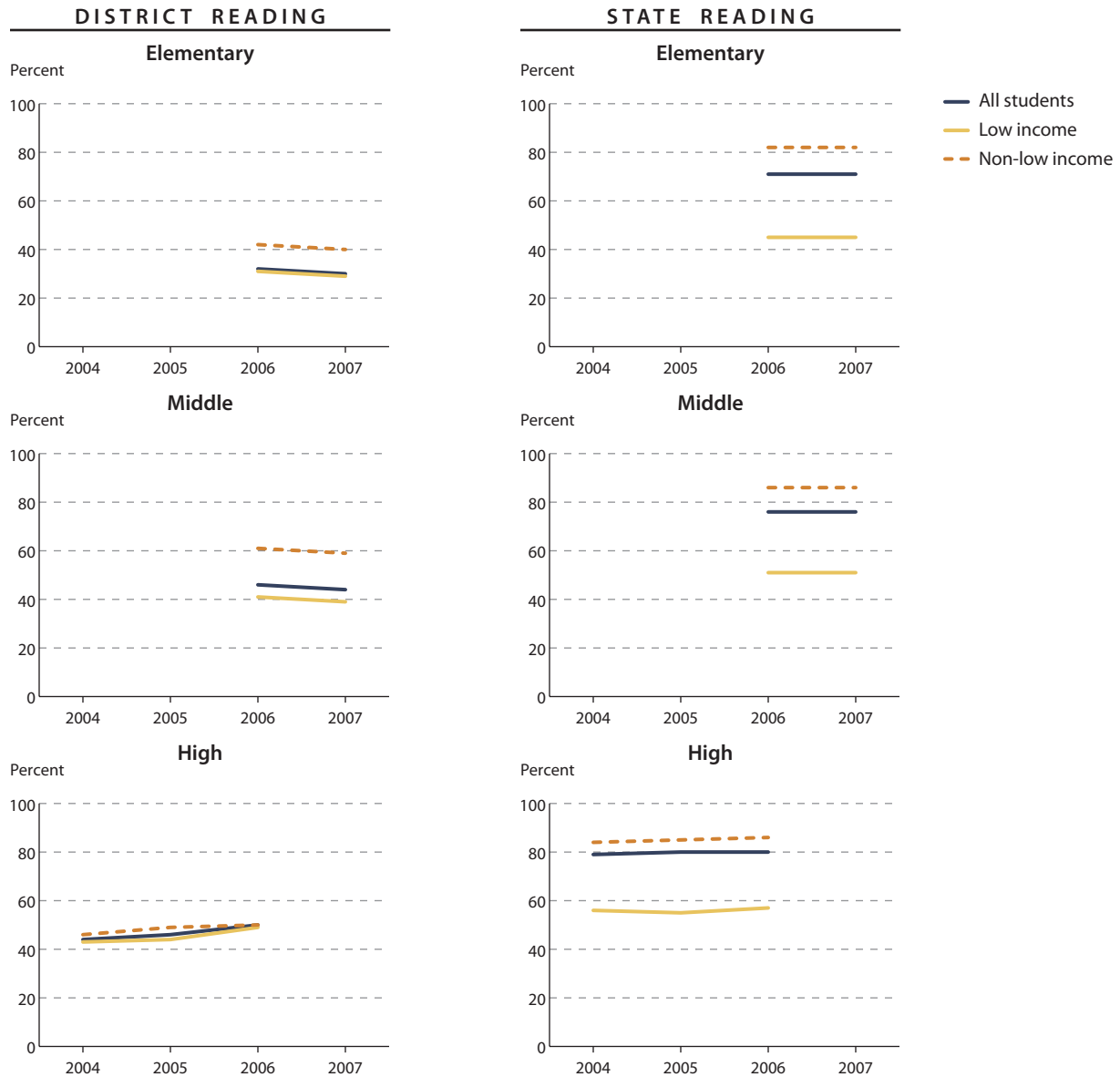
NOTES: See table on page 10 for details. Gaps in lines represent missing or noncomparable data.

Hartford Public Schools

CONNECTICUT

Income Status Trends in Reading Proficiency

Percentage of students scoring at or above proficient in reading, by income status, for the district and the state: 2004–2007

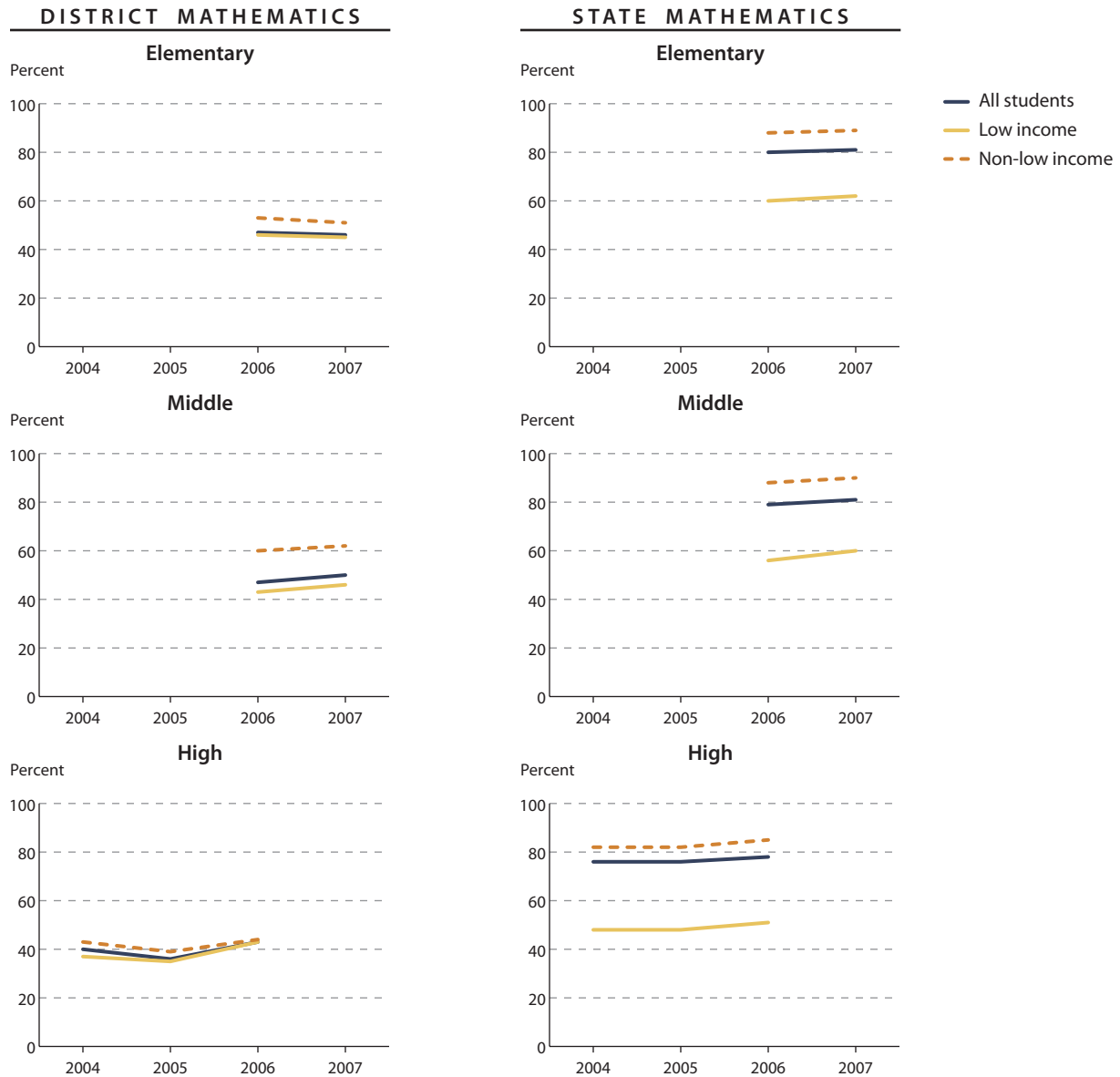


SOURCE: Analysis of state test data.

NOTES: See table on page 8 for details. Gaps in lines represent missing or noncomparable data.

Income Status Trends in Mathematics Proficiency

Percentage of students scoring at or above proficient in mathematics, by income status, for the district and the state: 2004–2007



SOURCE: Analysis of state test data.

NOTES: See table on page 10 for details. Gaps in lines represent missing or noncomparable data.

Hartford Public Schools

CONNECTICUT

Reading Proficiency Data Summary

Percentage of students in the district and the state scoring at or above proficient in reading: 2004–2007

	2004	2005	2006	2007	Change			Overall improvement
					2004–2007	2005–2007	2006–2007	
Elementary								
District								
All	34	26	32	30	‡	‡	-2	-2
African American	41	29	35	32	‡	‡	-4	-4
Asian	—	—	—	—	—	—	—	—
Hispanic	26	24	28	27	‡	‡	-1	-1
White	†	†	†	†	‡	‡	†	†
Low income	31	25	31	29	‡	‡	-2	-2
Non-low income	40	35	42	40	‡	‡	-2	-2
State								
All	68	67	71	71	‡	‡	0	0
African American	45	41	46	46	‡	‡	0	0
Asian	81	80	82	84	‡	‡	2	2
Hispanic	41	39	44	43	‡	‡	0	0
White	78	76	82	82	‡	‡	0	0
Low income	43	40	45	45	‡	‡	0	0
Non-low income	78	77	82	82	‡	‡	0	0
Middle								
District								
All	44	44	46	44	‡	‡	-1	-1
African American	48	48	47	46	‡	‡	-1	-1
Asian	—	—	—	†	—	—	—	—
Hispanic	38	37	39	37	‡	‡	-2	-2
White	64	72	78	79	‡	‡	2	2
Low income	43	40	41	39	‡	‡	-2	-2
Non-low income	48	57	61	59	‡	‡	-2	-2
State								
All	76	74	76	76	‡	‡	0	0
African American	50	49	53	53	‡	‡	0	0
Asian	85	83	86	87	‡	‡	1	1
Hispanic	47	46	50	49	‡	‡	0	0
White	86	84	86	86	‡	‡	0	0
Low income	49	48	51	51	‡	‡	0	0
Non-low income	86	83	86	86	‡	‡	0	0
High								
District								
All	44	46	50	50	‡	‡	‡	5
African American	41	48	49	47	‡	‡	‡	4
Asian	—	—	—	—	—	—	—	—
Hispanic	44	40	48	46	‡	‡	‡	6
White	67	65	69	84	‡	‡	‡	3
Low income	43	44	49	49	‡	‡	‡	6
Non-low income	46	49	50	53	‡	‡	‡	3
State								
All	79	80	80	80	‡	‡	‡	1
African American	54	56	57	54	‡	‡	‡	2
Asian	85	88	87	86	‡	‡	‡	0
Hispanic	55	57	57	57	‡	‡	‡	2
White	87	88	88	89	‡	‡	‡	1
Low income	56	55	57	55	‡	‡	‡	2
Non-low income	84	85	86	87	‡	‡	‡	2

SOURCE: Analysis of state test data.

— Not available. † Data were suppressed due to unreliability or if the subgroup represented less than 5 percent of test takers at a level. See methodology section.

‡ Calculation could not be performed due to a change in the state test.

NOTES: **Positive change values** appear in color. **Italicized values** are not comparable to other years. **Test standards changed in 2006** at the elementary and middle school levels; as a result, 2004 and 2005 proficiency results were not comparable to subsequent years. **“Overall improvement”** for these levels was generally calculated as the difference of performance in 2006 and 2007. **The 2007 high school test** was not comparable to previous years. **“Overall improvement”** at this level was generally calculated as the difference of performance in 2006 and average performance in 2004 and 2005.

Hartford Public Schools

CONNECTICUT

Reading Proficiency Gaps

Percentage-point gaps in reading proficiency rates between disadvantaged and advantaged groups: 2004–2007

	2004	2005	2006	2007	Change			Overall improvement	Gap closure type
					2004–2007	2005–2007	2006–2007		
Elementary									
Internal district gap									
African American vs. White	†	†	†	†	‡	‡	†	†	†
Hispanic vs. White	†	†	†	†	‡	‡	†	†	†
Low income vs. non-low income	-9	-10	-11	-11	‡	‡	0	0	—
Internal district vs. internal state gap									
African American vs. White	†	†	†	†	‡	‡	†	†	†
Hispanic vs. White	†	†	†	†	‡	‡	†	†	†
Low income vs. non-low income	26	27	26	26	‡	‡	0	0	—
External gap: district disadvantaged vs. state advantaged									
African American vs. White	-37	-47	-47	-51	‡	‡	-4	-4	—
Hispanic vs. White	-52	-52	-54	-55	‡	‡	-1	-1	—
Low income vs. non-low income	-47	-52	-52	-54	‡	‡	-2	-2	—
Middle									
Internal district gap									
African American vs. White	-16	-24	-31	-33	‡	‡	-2	-2	—
Hispanic vs. White	-26	-35	-39	-42	‡	‡	-3	-3	—
Low income vs. non-low income	-5	-17	-21	-20	‡	‡	0	0	—
Internal district vs. internal state gap									
African American vs. White	19	11	3	0	‡	‡	-2	-2	—
Hispanic vs. White	12	3	-2	-6	‡	‡	-4	-4	—
Low income vs. non-low income	31	18	14	14	‡	‡	0	0	—
External gap: district disadvantaged vs. state advantaged									
African American vs. White	-37	-36	-39	-40	‡	‡	-1	-1	—
Hispanic vs. White	-48	-47	-47	-49	‡	‡	-2	-2	—
Low income vs. non-low income	-43	-43	-45	-47	‡	‡	-2	-2	—
High									
Internal district gap									
African American vs. White	-26	-17	-20	-38	‡	‡	‡	1	1
Hispanic vs. White	-24	-25	-21	-38	‡	‡	‡	3	1
Low income vs. non-low income	-3	-5	-1	-4	‡	‡	‡	3	1
Internal district vs. internal state gap									
African American vs. White	6	15	11	-3	‡	‡	‡	0	—
Hispanic vs. White	9	6	9	-7	‡	‡	‡	2	1
Low income vs. non-low income	25	25	28	29	‡	‡	‡	3	1
External gap: district disadvantaged vs. state advantaged									
African American vs. White	-46	-40	-39	-42	‡	‡	‡	3	1
Hispanic vs. White	-43	-48	-40	-42	‡	‡	‡	5	1
Low income vs. non-low income	-41	-42	-37	-39	‡	‡	‡	5	1

SOURCE: Analysis of state test data.

— Not available. † Data were suppressed due to unreliability or if the subgroup represented less than 5 percent of test takers at a level. See methodology section.

‡ Calculation could not be performed due to a change in the state test.

NOTES: In the first four columns, negative numbers indicate an achievement gap, where the disadvantaged group performed lower than the advantaged group. (Positive numbers indicate the disadvantaged group performed higher than the advantaged group.) In the "change" columns, negative numbers indicate the achievement gap widened; positive numbers indicate the achievement gap narrowed. **Positive change values** appear in color. **Gap closure types include:** (1) Both advantaged and disadvantaged group proficiencies are increasing. The gap is closing because the disadvantaged group proficiency is increasing at a faster rate than the advantaged group. This is the most desirable type of gap closure. (2) The gap is closing; however, the advantaged group proficiency is unchanged or decreasing. (3) The disadvantaged group proficiency is unchanged or decreasing and the advantaged group proficiency is decreasing. The gap is closing because the advantaged group proficiency is decreasing at a faster rate than the disadvantaged group proficiency. (4) The number in the internal district vs. internal state improvement column is positive; however, the gap is not closing. The number is positive because the gap for the district's disadvantaged group is unchanged or increasing and the gap for the state's disadvantaged group is increasing, but the gap for the district is increasing at a slower rate. **Italicized values** are not comparable to other years. **Test standards changed in 2006** at the elementary and middle school levels; as a result, 2004 and 2005 proficiency results were not comparable to subsequent years. "Overall improvement" for these levels was generally calculated as the difference of performance in 2006 and 2007. **The 2007 high school test** was not comparable to previous years. "Overall improvement" at this level was generally calculated as the difference of performance in 2006 and average performance in 2004 and 2005.

Hartford Public Schools

CONNECTICUT

Mathematics Proficiency Data Summary

Percentage of students in the district and the state scoring at or above proficient in mathematics: 2004–2007

	2004	2005	2006	2007	Change			Overall improvement
					2004–2007	2005–2007	2006–2007	
Elementary								
District								
All	57	51	47	46	‡	‡	-1	-1
African American	60	50	44	44	‡	‡	-1	-1
Asian	—	—	—	—	—	—	—	—
Hispanic	53	47	46	45	‡	‡	-1	-1
White	†	†	†	†	‡	‡	†	†
Low income	57	49	46	45	‡	‡	-1	-1
Non-low income	58	55	53	51	‡	‡	-3	-3
State								
All	80	79	80	81	‡	‡	1	1
African American	58	56	57	60	‡	‡	3	3
Asian	91	90	92	93	‡	‡	1	1
Hispanic	61	60	60	62	‡	‡	2	2
White	88	88	88	90	‡	‡	1	1
Low income	61	59	60	62	‡	‡	2	2
Non-low income	87	87	88	89	‡	‡	1	1
Middle								
District								
All	56	52	47	50	‡	‡	3	3
African American	57	51	44	47	‡	‡	3	3
Asian	—	—	—	†	—	—	—	—
Hispanic	53	48	43	46	‡	‡	3	3
White	74	81	80	86	‡	‡	6	6
Low income	56	48	43	46	‡	‡	3	3
Non-low income	56	60	60	62	‡	‡	1	1
State								
All	79	77	79	81	‡	‡	2	2
African American	54	52	54	58	‡	‡	5	5
Asian	91	91	92	93	‡	‡	1	1
Hispanic	54	53	55	59	‡	‡	4	4
White	89	87	89	90	‡	‡	2	2
Low income	56	55	56	60	‡	‡	4	4
Non-low income	88	86	88	90	‡	‡	2	2
High								
District								
All	40	36	43	43	‡	‡	‡	5
African American	36	34	38	39	‡	‡	‡	3
Asian	—	—	—	—	—	—	—	—
Hispanic	39	35	45	39	‡	‡	‡	8
White	66	61	67	86	‡	‡	‡	4
Low income	37	35	43	39	‡	‡	‡	7
Non-low income	43	39	44	52	‡	‡	‡	3
State								
All	76	76	78	77	‡	‡	‡	2
African American	42	45	46	43	‡	‡	‡	3
Asian	86	87	88	87	‡	‡	‡	2
Hispanic	46	47	51	51	‡	‡	‡	5
White	86	86	88	88	‡	‡	‡	2
Low income	48	48	51	49	‡	‡	‡	3
Non-low income	82	82	85	86	‡	‡	‡	3

SOURCE: Analysis of state test data.

— Not available. † Data were suppressed due to unreliability or if the subgroup represented less than 5 percent of test takers at a level. See methodology section.

‡ Calculation could not be performed due to a change in the state test.

NOTES: **Positive change values** appear in color. **Italicized values** are not comparable to other years. **Test standards changed in 2006** at the elementary and middle school levels; as a result, 2004 and 2005 proficiency results were not comparable to subsequent years. **“Overall improvement”** for these levels was generally calculated as the difference of performance in 2006 and 2007. **The 2007 high school test** was not comparable to previous years. **“Overall improvement”** at this level was generally calculated as the difference of performance in 2006 and average performance in 2004 and 2005.

Hartford Public Schools

CONNECTICUT

Mathematics Proficiency Gaps

Percentage-point gaps in mathematics proficiency rates between disadvantaged and advantaged groups: 2004–2007

	2004	2005	2006	2007	Change			Overall improvement	Gap closure type
					2004–2007	2005–2007	2006–2007		
Elementary									
Internal district gap									
African American vs. White	†	†	†	†	‡	‡	†	†	†
Hispanic vs. White	†	†	†	†	‡	‡	†	†	†
Low income vs. non-low income	-1	-6	-8	-6	‡	‡	2	2	3
Internal district vs. internal state gap									
African American vs. White	†	†	†	†	‡	‡	†	†	†
Hispanic vs. White	†	†	†	†	‡	‡	†	†	†
Low income vs. non-low income	25	22	21	22	‡	‡	1	1	3
External gap: district disadvantaged vs. state advantaged									
African American vs. White	-28	-38	-44	-46	‡	‡	-2	-2	—
Hispanic vs. White	-35	-41	-43	-45	‡	‡	-2	-2	—
Low income vs. non-low income	-30	-38	-43	-44	‡	‡	-2	-2	—
Middle									
Internal district gap									
African American vs. White	-17	-30	-36	-38	‡	‡	-2	-2	—
Hispanic vs. White	-21	-33	-37	-39	‡	‡	-3	-3	—
Low income vs. non-low income	-1	-12	-18	-16	‡	‡	2	2	1
Internal district vs. internal state gap									
African American vs. White	18	5	-1	-6	‡	‡	-5	-5	—
Hispanic vs. White	14	1	-3	-8	‡	‡	-5	-5	—
Low income vs. non-low income	32	19	15	14	‡	‡	0	0	—
External gap: district disadvantaged vs. state advantaged									
African American vs. White	-33	-36	-45	-43	‡	‡	2	2	1
Hispanic vs. White	-37	-39	-45	-44	‡	‡	1	1	1
Low income vs. non-low income	-32	-39	-45	-44	‡	‡	2	2	1
High									
Internal district gap									
African American vs. White	-30	-27	-29	-47	‡	‡	‡	-1	—
Hispanic vs. White	-27	-26	-22	-46	‡	‡	‡	5	1
Low income vs. non-low income	-5	-4	-1	-13	‡	‡	‡	4	1
Internal district vs. internal state gap									
African American vs. White	15	15	14	-1	‡	‡	‡	-1	—
Hispanic vs. White	13	13	15	-8	‡	‡	‡	2	1
Low income vs. non-low income	29	31	34	24	‡	‡	‡	4	1
External gap: district disadvantaged vs. state advantaged									
African American vs. White	-50	-52	-50	-50	‡	‡	‡	1	1
Hispanic vs. White	-48	-51	-43	-49	‡	‡	‡	6	1
Low income vs. non-low income	-45	-48	-42	-47	‡	‡	‡	4	1

SOURCE: Analysis of state test data.

— Not available. † Data were suppressed due to unreliability or if the subgroup represented less than 5 percent of test takers at a level. See methodology section.

‡ Calculation could not be performed due to a change in the state test.

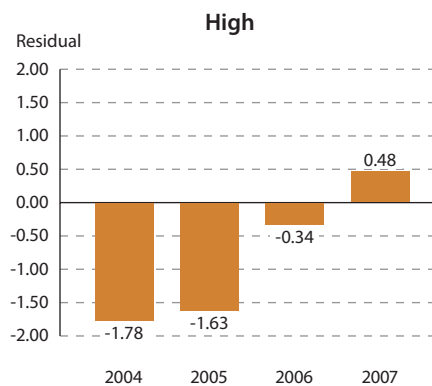
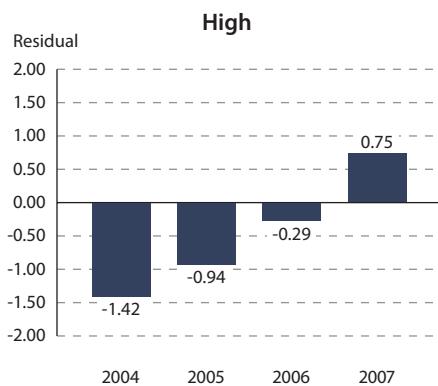
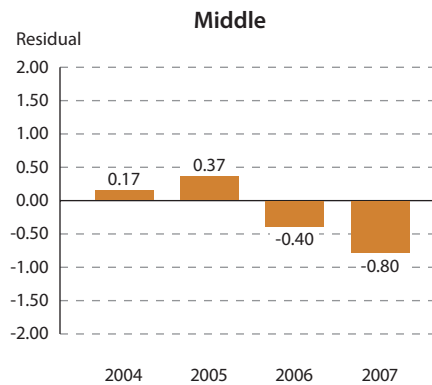
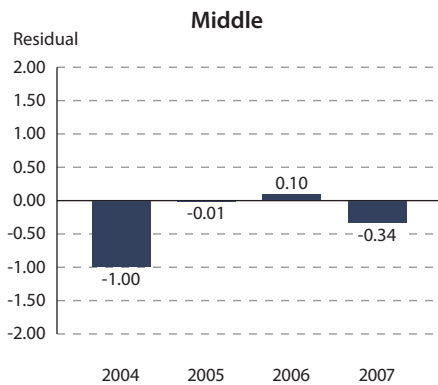
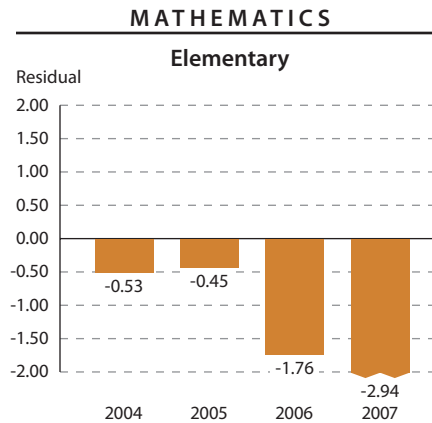
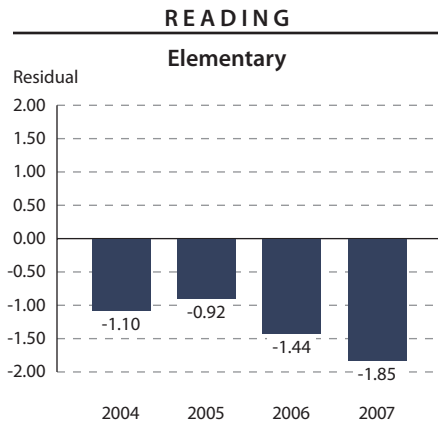
NOTES: In the first four columns, negative numbers indicate an achievement gap, where the disadvantaged group performed lower than the advantaged group. (Positive numbers indicate the disadvantaged group performed higher than the advantaged group.) In the "change" columns, negative numbers indicate the achievement gap widened; positive numbers indicate the achievement gap narrowed. **Positive change values** appear in color. **Gap closure types include:** (1) Both advantaged and disadvantaged group proficiencies are increasing. The gap is closing because the disadvantaged group proficiency is increasing at a faster rate than the advantaged group. This is the most desirable type of gap closure. (2) The gap is closing; however, the advantaged group proficiency is unchanged or decreasing. (3) The disadvantaged group proficiency is unchanged or decreasing and the advantaged group proficiency is decreasing. The gap is closing because the advantaged group proficiency is decreasing at a faster rate than the disadvantaged group proficiency. (4) The number in the internal district vs. internal state improvement column is positive; however, the gap is not closing. The number is positive because the gap for the district's disadvantaged group is unchanged or increasing and the gap for the state's disadvantaged group is increasing, but the gap for the district is increasing at a slower rate. **Italicized values** are not comparable to other years. **Test standards changed in 2006** at the elementary and middle school levels; as a result, 2004 and 2005 proficiency results were not comparable to subsequent years. "Overall improvement" for these levels was generally calculated as the difference of performance in 2006 and 2007. **The 2007 high school test** was not comparable to previous years. "Overall improvement" at this level was generally calculated as the difference of performance in 2006 and average performance in 2004 and 2005.

Hartford Public Schools

CONNECTICUT

Trends in Actual vs. Expected Performance for ALL STUDENTS

Standardized residuals¹ for the percentage of students in the district scoring at or above proficient in reading and mathematics, controlling for poverty level: 2004–2007



SOURCE: Analysis of state test data.

¹ Positive residuals indicate higher-than-expected performance, and negative residuals indicate lower-than-expected performance, given the district's poverty level. Residuals are expressed in standard units.

NOTES: See table on page 13 for details.

Hartford Public Schools

CONNECTICUT

Standardized Residuals Data for Reading and Mathematics

Standardized residuals¹ for regressions of the percentage of students in the district scoring at or above proficient on the percentage of poverty in the district: 2004–2007

	2004	2005	2006	2007	Overall performance	Overall improvement
Reading						
Elementary						
All	-1.10	-0.92	-1.44	-1.85	-1.64	-0.64
African American	0.18	-0.56	-0.48	-0.75	-0.62	-0.42
Hispanic	-0.63	-0.16	-0.47	-0.70	-0.59	-0.19
Low income	-0.59	-0.58	-0.75	-1.09	-0.92	-0.33
Middle						
All	-1.00	-0.01	0.10	-0.34	-0.12	0.39
African American	0.46	0.46	0.62	0.40	0.51	0.05
Hispanic	-0.10	0.02	0.16	-0.21	-0.03	0.01
Low income	-0.02	0.09	0.27	-0.06	0.11	0.07
High						
All	-1.42	-0.94	-0.29	0.75	0.23	1.41
African American	-0.38	-0.35	0.17	0.59	0.38	0.74
Hispanic	-0.17	-1.02	0.42	0.48	0.45	1.05
Low income	-0.21	-0.14	0.40	0.98	0.69	0.87
Mathematics						
Elementary						
All	-0.53	-0.45	-1.76	-2.94	-2.35	-1.86
African American	0.53	†	-0.57	-0.67	-0.62	-1.15
Hispanic	-0.19	-0.38	-0.63	-1.20	-0.91	-0.62
Low income	-0.02	-0.25	-0.85	-1.43	-1.14	-1.01
Middle						
All	0.17	0.37	-0.40	-0.80	-0.60	-0.87
African American	1.17	0.50	0.06	-0.16	-0.05	-0.88
Hispanic	0.73	0.49	-0.02	-0.28	-0.15	-0.76
Low income	0.63	0.44	0.00	-0.11	-0.06	-0.59
High						
All	-1.78	-1.63	-0.34	0.48	0.07	1.77
African American	0.40	-0.54	0.12	0.82	0.47	0.53
Hispanic	0.66	-0.55	0.84	0.42	0.63	0.58
Low income	-0.17	-0.35	0.51	0.63	0.57	0.83
Positive residuals, total						
All	1	1	1	2	2	3
African American	5	2	4	3	3	3
Hispanic	2	2	3	2	2	3
Low income	1	2	3	2	3	3
Available residuals, total						
All	6	6	6	6	6	6
African American	6	5	6	6	6	6
Hispanic	6	6	6	6	6	6
Low income	6	6	6	6	6	6

SOURCE: Analysis of state test data.

— Not available. † Data were suppressed due to unreliability or if the subgroup represented less than 5 percent of test takers at a level. See methodology section.

¹ Positive residuals indicate higher-than-expected performance, and negative residuals indicate lower-than-expected performance, given the district's poverty level. Residuals are expressed in standard units.

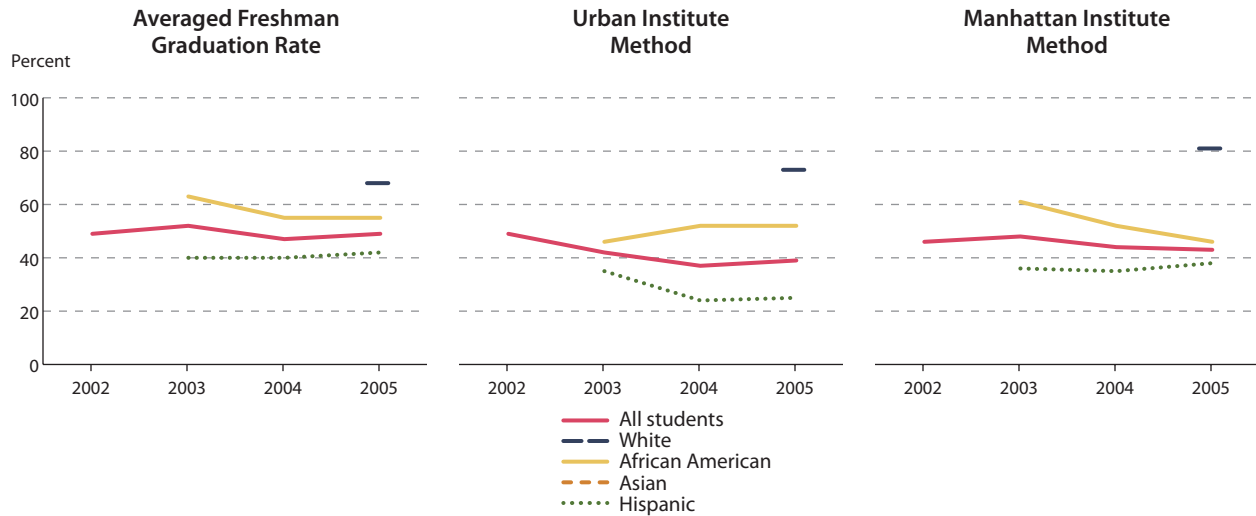
NOTES: **Positive performance** and improvement values appear in color. For residuals, "overall performance" is the average for 2006 and 2007. For the count of "positive residuals" and "available residuals", the "overall performance" column shows the total count of positive residuals in the column, and the "overall improvement" column shows the total count of available residuals in the column. "Overall improvement" was generally calculated as the difference of average performance in 2006 and 2007 and average performance in 2004 and 2005; see methodology section.

Hartford Public Schools

CONNECTICUT

High School Graduation Rates

Three estimated high school graduation rates: 2002–2005



Estimated high school graduation rates for the classes of 2002–2005

	2002	2003	2004	2005	Change			Overall improvement
					2002–2005	2003–2005	2004–2005	
Averaged Freshman Graduation Rate								
All	49	52	47	49	-1	-3	2	-3
African American	—	63	55	55	—	-8	0	-9
Asian	—	†	†	†	—	†	†	†
Hispanic	—	40	40	42	—	2	2	1
White	—	†	†	68	—	†	†	†
Urban Institute method¹								
All	49	42	37	39	-10	-3	1	-7
African American	—	46	52	52	—	6	0	6
Asian	—	†	†	†	—	†	†	†
Hispanic	—	35	24	25	—	-9	1	-10
White	—	†	†	73	—	†	†	†
Manhattan Institute method¹								
All	46	48	44	43	-3	-5	-1	-3
African American	—	61	52	46	—	-15	-5	-12
Asian	—	†	†	†	—	†	†	†
Hispanic	—	36	35	38	—	1	2	0
White	—	†	†	81	—	†	†	†

SOURCE: Analysis of data from the U.S. Department of Education, National Center for Education Statistics, Common Core of Data (CCD).

— Not available. † Data were suppressed due to unreliability or if a subgroup represented less than 5 percent of the population. See methodology section.

¹ The Urban Institute method is also known as Swanson's cumulative promotion index (SCPI) and the Manhattan Institute method is also known as Greene's graduation indicator (GGI).

NOTES: **Gaps in lines** represent missing data. **Positive change values** appear in color. **Graduation data** by race/ethnicity were not available for 2002. **"Overall improvement"** was generally calculated as the difference of average performance in 2004 and 2005 and average performance in 2002 and 2003; see methodology section.

Hartford Public Schools

CONNECTICUT

College Readiness Data

Test scores and participation rates for college readiness examinations: 2004–2007

	2004	2005	2006	2007	Change			Overall Improvement
					2004–2007	2005–2007	2006–2007	
SAT Reasoning Test¹								
Mean total score (reading and mathematics)								
All	795	788	768	779	-16	-9	11	-18
African American	786	776	756	775	-11	-1	19	-16
Asian	†	†	†	†	†	†	†	†
Hispanic	810	815	794	774	-36	-41	-20	-29
White	917	†	893	875	-42	†	-18	-33
Participation rate								
All	54	55	62	67	13	12	5	10
African American	45	50	46	61	16	11	15	6
Asian	†	†	†	†	†	†	†	†
Hispanic	25	30	36	46	21	16	10	13
White	46	23	48	32	-14	10	-16	6
ACT¹								
Mean composite score (English, reading, mathematics, and science)								
All	17	18	18	16	0	-1	-2	0
African American	16	17	†	16	-1	-1	†	-1
Asian	†	†	†	†	†	†	†	†
Hispanic	†	†	†	†	†	†	†	†
White	†	†	—	—	—	—	—	—
Participation rate								
All	5	4	3	5	0	0	2	-1
African American	10	6	3	6	-3	1	3	-3
Asian	†	†	†	†	†	†	†	†
Hispanic	1	2	1	1	0	-1	0	-1
White	4	2	0	0	-4	-2	0	-3
Advanced Placement (AP) (all subjects)²								
Percent of tests taken with scores of 3 or above								
All	43	36	23	22	-21	-13	-1	-17
African American	19	20	8	5	-14	-15	-3	-13
Asian	†	†	†	†	†	†	†	†
Hispanic	56	39	29	26	-30	-14	-3	-20
White	†	55	47	59	†	4	12	-2
Participation rate								
All	5	4	10	11	6	8	2	6
African American	4	1	7	10	6	9	3	6
Asian	†	†	†	†	†	†	†	†
Hispanic	4	3	7	8	4	5	1	4
White	6	9	15	13	7	4	-2	6

SOURCE: Analysis of data from the Common Core of Data (CCD), ACT, and the College Board (copyright © 2004–2007 The College Board. www.collegeboard.com).

— Not available.

† Test scores were suppressed if fewer than 15 students took the test. Participation rates were suppressed due to unreliability or if the subgroup represented less than 5 percent of district enrollment in the relevant grades. See methodology section.

¹ Describes the most recent test results for graduating seniors.

² Describes test results for juniors and seniors taking any AP test in the given year.

NOTES: **Subgroup participation rates** may not reflect the “all students” rate due to some test takers not reporting their race/ethnicity. **Positive change values** appear in color. **CCD data for 2007** were not available at the time of this analysis; participation rates for 2007 were estimated using 2006 enrollment data. **“Overall improvement”** was generally calculated as the difference of average performance in 2006 and 2007 and average performance in 2004 and 2005; see methodology section.

Hartford Public Schools

CONNECTICUT

Adequate Yearly Progress (AYP)

Breakdown by subgroup of whether or not AYP was achieved (yes or no): 2005–2007

	2005		2006		2007	
	District	State	District	State	District	State
Percent of schools meeting AYP targets	32	80	13	66	10	68
	Met AYP? (Y/N)		Met AYP? (Y/N)		Met AYP? (Y/N)	
	Elementary/Middle	High	Elementary/Middle	High	Elementary/Middle	High
District Overall AYP Status	N	N	N	N	N	N
Proficiency						
English language arts						
All Students	N	Y	N	Y	N	N
African American	N	Y	N	Y	N	N
American Indian/Alaska Native	—	—	n<Req	n<Req	n<Req	n<Req
Asian/Pacific Islander	—	—	Y	n<Req	Y	n<Req
Hispanic	N	Y	N	N	N	N
White	Y	Y	Y	Y	Y	Y
Low income	N	Y	N	Y	N	N
English language learners	N	N	N	N	N	N
Students with disabilities	N	N	N	N	N	N
Mathematics						
All Students	N	N	N	N	N	N
African American	N	N	N	N	N	N
American Indian/Alaska Native	—	—	n<Req	n<Req	n<Req	n<Req
Asian/Pacific Islander	—	—	Y	n<Req	Y	n<Req
Hispanic	N	N	N	N	N	N
White	Y	Y	Y	Y	Y	Y
Low income	N	N	N	N	N	N
English language learners	N	N	N	N	N	N
Students with disabilities	N	N	N	N	N	N
Participation						
English language arts						
All Students	Y	N	Y	N	Y	Y
African American	Y	N	Y	N	Y	Y
American Indian/Alaska Native	—	—	n<Req	n<Req	n<Req	n<Req
Asian/Pacific Islander	—	—	Y	n<Req	Y	n<Req
Hispanic	Y	N	Y	N	Y	N
White	Y	Y	Y	Y	Y	Y
Low income	Y	N	Y	N	Y	Y
English language learners	Y	Y	Y	N	Y	N
Students with disabilities	Y	N	Y	N	Y	N
Mathematics						
All Students	Y	N	Y	N	Y	Y
African American	Y	N	Y	N	Y	Y
American Indian/Alaska Native	—	—	n<Req	n<Req	n<Req	n<Req
Asian/Pacific Islander	—	—	Y	n<Req	Y	n<Req
Hispanic	Y	N	Y	N	Y	N
White	Y	Y	Y	Y	Y	Y
Low income	Y	N	Y	N	Y	Y
English language learners	Y	Y	Y	N	Y	N
Students with disabilities	Y	N	Y	N	Y	N

SOURCE: Data collected by American Institutes for Research from state websites and education agencies.

— Not available.

NOTES: "n<Req" indicates that the number of students in the subgroup was too small to meet the minimum "n" size to be counted for AYP. Some 2007 data were not available at the time of this report's publication.

Technical Notes and Methodology

Understanding the Data Report

This data report contains all of the data collected and analyzed for selection of The 2008 Broad Prize finalists. It does not contain summaries that compare the district to other districts, nor any additional quantitative or qualitative data collected or analyzed for selection of the winner.

The Broad Prize finalists are determined by a panel of education experts from around the country, based on a review of the data and analyses for the 100 Broad Prize-eligible districts. There is neither a strict formula nor set of weighting factors applied to the data. Each Broad Prize Review Board member considers all of the data and analyses available each year and, based on his or her knowledge and expertise, selects five finalists. Both performance as of the most recent year and improvement over the four most recent years on the various measures included in this report are considered by the Review Board.

The rest of this section discusses the data collection and analysis procedures used to produce the data report. First, it describes the criteria and data sources for identifying the eligible districts. Second, it reviews each of the quantitative achievement measures used by the Review Board in March 2008 to identify the five finalists and the data on which the measures were based.

Eligible Districts

To be eligible for The Broad Prize, school districts must meet certain criteria set by The Broad Foundation related to size, poverty and urbanicity. Winners from the previous three years are ineligible. The criteria for eligibility are:

- All K–12 districts serving more than 100,000 students (25 districts).
- All K–12 districts serving between 35,000 and 99,999 students in which at least 40 percent of students are eligible for free or reduced-price school lunch (FRSL), in which at least 40 percent of student enrollment comes from minority groups, and which have an urban designation (Locale Code 1, 2 or 3 in the CCD data¹) (63 districts).
- The largest urban district (Locale Code 1, 2 or 3) in states with no districts meeting the above criteria, as long as the district has at least 20,000 students (11 districts).
- The next largest districts in the nation meeting the criteria of 40 percent FRSL, 40 percent minority and an urban designation (Locale Code 1, 2 or 3). The purpose of this criterion was to bring the total number of districts to 100 (1 district).

For The 2008 Broad Prize, the 2005, 2006 and 2007 winners, Norfolk, Boston and New York City, respectively, were removed from eligibility and the 2004 winner (Garden Grove) became eligible again. Data for the non-eligible previous winners were also collected and reported to The Broad Prize Review Board.

¹ Locale Code 1 (Large City) represents a city with a population of 250,000 or larger that is the central city in a Census Bureau Core-Based Statistical Area (CBSA) or Consolidated Statistical Area (CSA); Code 2 (Mid-size City) is a city with less than 250,000 people that nonetheless is a central city in a CBSA or CSA; and Code 3 (Urban Fringe of a Large City) represents an area defined as urban by the Census Bureau and that falls within the CBSA or CSA of a large city.

Technical Notes and Methodology

The 100 eligible school districts are located in 38 states and the District of Columbia. Twelve states—Delaware, Hawaii, Idaho, Maine, Massachusetts, Montana, New Hampshire, North Dakota, South Dakota, Vermont, West Virginia and Wyoming—have no eligible districts this year. Hawaii is ineligible because it has a statewide school system.

Data Used for Measures of Student Achievement

Detailed data on various measures of student achievement were obtained for each district, using federal, state and other sources. Wherever possible, data were collected by grade level, race/ethnicity (African-American, Asian, Hispanic and White), and income status (low income and non-low income). The achievement data examined included performance on state achievement tests, graduation rates based on federal counts of high school enrollments and completions, college readiness data obtained from the College Board and ACT, and information on Adequate Yearly Progress (AYP) compiled and reported by the American Institutes for Research (AIR) from a database maintained by the U.S. Department of Education and from state sources.

National Assessment of Educational Progress (NAEP)

To provide context for the state achievement data, state performance on the National Assessment of Educational Progress (NAEP) was also obtained. On a regular basis, the NAEP—administered by the National Center for Education Statistics (NCES)—publishes achievement scores for the nation for students in the 4th, 8th and 12th grades (national NAEP), and achievement scores for participating states for students in the 4th and 8th grades (state NAEP). These scores are based on tests administered to samples of students at the different grade levels. State NAEP scores were presented to the Review Board as a means of “calibrating” test results among states. Additional information was presented to the Review Board from both the 2007 NAEP Trial Urban District Assessment (TUDA) and an NCES study mapping states’ 2005 state proficiency standards onto the 2005 NAEP scales (a similar 2007 study is not yet available). The 2007 NAEP Trial Urban District Assessment (TUDA) data for 4th- and 8th-grade reading and mathematics were available for 11 large urban school districts, all of which were either eligible for The 2008 Broad Prize or a past winner. The results of the 2005 NCES study of proficiency standards were available for 32 of the states with eligible districts. These data were presented to provide additional contextual information for the Review Board. The NAEP scores are publicly available and are not included in this data report.

Reading and Mathematics Proficiency as Determined by State Tests

Key indicators of student performance are scores on state-mandated achievement tests and trends in scores over time. Test score data in reading and mathematics were collected from each state for 2004 through 2007.² These data were used to calculate the percentage of students in each district scoring at or above proficiency on their state tests in reading and mathematics in each grade. Weighted by the number of test takers at each grade level, these data on student achievement were aggregated across elementary grades (third through fifth), middle grades (sixth through eighth), and high school grades (ninth through 12th), where available. These state assessment data were analyzed (using methods described later) to calculate actual versus expected performance, gaps

² The data were provided directly by state agencies or downloaded from their websites.

Technical Notes and Methodology

between low- and non-low-income students, and gaps between White and African-American students and White and Hispanic students. Changes in gaps over time were also computed and gap closures presented.

High School Graduation Rates

Another key measure of student performance is the graduation rate. While using longitudinal student data generates the most accurate graduation rate, such data are not currently available in most states. In the absence of longitudinal data, cross-sectional data can be used to generate estimates of rates of high school graduation. There are several methods generally considered reliable estimators of graduation rates, three of which are used in this report and are described in the next section on methods of analysis.

In order to generate estimates that are comparable across the 100 Broad Prize-eligible districts, MPR obtains diploma counts and enrollment data for the districts from the federal Common Core of Data (CCD). The data used to create graduation rate estimates include total and subgroup enrollments and completion counts for each district for the high school classes of 2002 through 2005 (the most recent years that were available at time of analysis). The different methods also employ grade-level enrollment data, but the methods vary in terms of the specific years of enrollment data used in the calculations.

College Readiness Data

District-level measures of the college readiness of their students include SAT and ACT mean scores and participation rates. These two tests are designed to assess readiness for college-level work. Scale scores for each subject (reading and math) assessed by the SAT range from 200 to 800. (Writing scores were not included because data were not available for all four years.) Scale scores for the composite ACT test (covering English, mathematics, reading and science) range from 1 to 36. With district permission, the College Board and ACT provided mean test scores for each district for 2004 through 2007, along with the number of seniors who had ever taken the test (regardless of when they took the test during high school). The most recent test scores were provided.

Another measure of college readiness is the extent to which students take and pass Advanced Placement (AP) examinations. These examinations provide a standardized measure of student performance in college-level courses taken while in high school. AP grades are reported on a five-point scale:

- 5 = Extremely well qualified
- 4 = Well qualified
- 3 = Qualified
- 2 = Possibly qualified
- 1 = No recommendation

With permission from each district, the College Board provided data for the district for 2004 through 2007 on the number of AP examinations at each score level and on the number of juniors and seniors who took the test. MPR

Technical Notes and Methodology

staff used these numbers to calculate percentages of AP examinations with scores of three or above (equivalent to pass rates) for each district.

The College Board and ACT do not calculate test participation rates. MPR staff calculated participation rates using enrollment data obtained from the federal Common Core of Data (CCD) for 11th- and 12th-graders, as appropriate, in combination with the number of students taking the different tests.

Adequate Yearly Progress (AYP) Data

The data presented indicate the percentage of schools in each district and state that met federal AYP requirements in 2005 through 2007 under the No Child Left Behind (NCLB) legislation. Also presented is an indicator of whether the district met its overall AYP target in the given year and additional AYP detail for student subgroups, where available. These data were compiled by the American Institutes for Research (AIR) from a database maintained by the U.S. Department of Education and from state sources.

Data Analysis Methods

The 2008 Broad Prize data report presents data collected on district characteristics, background on state tests and AYP. In addition, MPR staff analyzed the above-described data on student achievement to develop measures of the following: achievement gaps, standardized residuals, graduation rates and college readiness. Trend data are presented where available, as are “performance” and “improvement” measures. Each data report section is explained here and the relevant report page numbers are indicated in parentheses. Additional explanatory notes are included as footnotes in the data report itself.

MPR staff analyzed the data on student achievement described above to develop measures of the following:

- District and state proficiency rates on state reading and mathematics tests by education level (elementary, middle and high school) for the All Students group, racial/ethnic subgroups—African American, Asian, Hispanic and White—and low-income and non-low-income subgroups.
- Achievement gaps between Whites and other racial/ethnic groups—African-Americans and Hispanics—and between low-income and non-low-income students, and the progress that is being made in closing these gaps.
- Expected versus actual performance on state tests, taking into consideration differences in state tests and the proportion of low-income students in each district.
- High school graduation rates.
- College readiness.

These are explained below.

Technical Notes and Methodology

Background Information (page 2)

Description of District: 2003–2006

Background information on the finalists is presented in this section. These data were generally obtained from the U.S. Department of Education’s Common Core of Data (CCD). Demographic percentages were calculated using enrollment counts. The minority percentages were calculated as the sum of non-White enrollments divided by the total district enrollment. Percent minority may not equal 100 percent minus percent White due to the small amounts of missing race/ethnicity data in some districts.

The information in the table is organized as follows:

First column: Lists the district characteristics, student characteristics and types of expenditures shown in the table

Remaining columns: Lists data for each year for which data were available (2003, 2004, 2005 and 2006)

State Test Information: 2004–2007

Key indicators of student performance include scores on state-mandated achievement tests and trends in scores over time. The state test information shows the tests and grades that were included in The 2008 Broad Prize analysis. The table notes indicate whether any tests were not comparable to other years, and may provide additional information. Non-comparable tests were not included in calculations of “change” or “overall improvement” on pages 8 through 11. Because of the “relative” nature of standardized residuals, however, data for all tests were included in calculations of “overall performance” and “overall improvement” on page 13.

The information in the table is organized as follows:

First column: Lists the subject (reading and math) and level (Elementary, Middle and High School)

Second column: Specifies the test

Remaining columns: Specifies the grades included in the analysis for 2004, 2005, 2006, and 2007

Trends in Proficiency and Participation Rates (pages 3–7)

Test score data in reading and mathematics were collected from each state for 2004 through 2007. These data were used to calculate the percentage of students scoring at or above proficiency on their state tests in reading and mathematics in each grade. Weighted by the number of test takers at each grade level, these data on student achievement were aggregated across elementary grades (third through fifth), middle grades (sixth through eighth), and high school grades (ninth through 12th), where available.

District and state trends in proficiency are shown for All Students in reading and math (page 3). Trends are also disaggregated by race/ethnicity (pages 4–5) and income status (pages 6–7) for both the district and state.

Technical Notes and Methodology

Non-comparable test data are not included in trend lines. Data were suppressed if a subgroup represented less than 5 percent of the test takers in a subject at a level (elementary, middle, high school) or if the data were unreliable.

Trends in Overall Reading and Mathematics Proficiency (page 3)

Six different trend charts, with data for 2004, 2005, 2006 and 2007, are shown as follows:

- Left side: District reading and mathematics proficiency trend lines for the elementary, middle and high school levels
- Right side: State reading and mathematics proficiency trend lines for the elementary, middle and high school levels

Race/Ethnicity Trends in Reading Proficiency (page 4)

Six different trend charts, with data for 2004, 2005, 2006 and 2007, are shown as follows:

- Left side: District reading proficiency trend lines for White, African-American, Asian and Hispanic students at the elementary, middle and high school levels
- Right side: State reading proficiency trend lines for White, African-American, Asian and Hispanic students at the elementary, middle and high school levels

Race/Ethnicity Trends in Mathematics Proficiency (page 5)

Six different trend charts, with data for 2004, 2005, 2006 and 2007, are shown as follows:

- Left side: District mathematics proficiency trend lines for White, African-American, Asian and Hispanic students at the elementary, middle and high school levels
- Right side: State mathematics proficiency trend lines for White, African-American, Asian and Hispanic students at the elementary, middle and high school levels

Income Status Trends in Reading Proficiency (page 6)

Six different trend charts, with data for 2004, 2005, 2006 and 2007, are shown as follows:

- Left side: District reading proficiency trend lines for all students, low-income, and non-low-income students at the elementary, middle and high school levels
- Right side: State reading proficiency trend lines for all students, low-income, and non-low-income students at the elementary, middle and high school levels

Income Status Trends in Mathematics Proficiency (page 7)

Six different trend charts, with data for 2004, 2005, 2006 and 2007, are shown as follows:

- Left side: District mathematics proficiency trend lines for all students, low-income, and non-low-income students at the elementary, middle and high school levels
- Right side: State mathematics proficiency trend lines for all students, low-income, and non-low-income students at the elementary, middle and high school levels

Technical Notes and Methodology

Proficiency Data Summaries (pages 8 and 10)

Percentages of students scoring at or above proficiency on the state tests between 2004 and 2007 are shown for reading on page 8 and for math on page 10 for both the district and the state.

The tables also show calculations of improvement over time. Simple change is calculated as the difference between 2004 and 2007, between 2005 and 2007, and between 2006 and 2007. Where data for one or two years in the pair were not available, not comparable, or suppressed, these change calculations could not be performed.

In addition, “overall improvement” was generally calculated as the difference between the average of performance in 2006 and 2007 and the average of performance in 2004 and 2005. Missing data were handled as follows: if data were missing for either year in a pair, data for the other year were used to measure performance; if data were missing for both 2004 and 2005, improvement from 2006 to 2007 was measured; and if data were missing for both 2006 and 2007, no improvement measure was calculated.

Data could be missing either because they were not available (indicated by “—”) or because they were suppressed (indicated by “+”). Data were suppressed if a subgroup represented less than five percent of the test takers in a subject at a level (elementary, middle, high school) or if the data were unreliable. Data that were not comparable to other years, due, for example, to changes in the state test as described above, appear in italics and were treated in calculations as missing data (the result is indicated by “‡”).

Calculations were performed on unrounded numbers. Positive change values appear in color.

Reading and Mathematics Proficiency Data Summary (pages 8 and 10)

The information in the tables is organized as follows:

First column:	Subgroups are specified for the district and state for each of the three levels (elementary, middle and high school)
Second column:	Proficiencies are specified for the 2004 academic year
Third column:	Proficiencies are specified for the 2005 academic year
Fourth column:	Proficiencies are specified for the 2006 academic year
Fifth column:	Proficiencies are specified for the 2007 academic year
Sixth column:	Change in proficiency is shown for the 2007 academic year minus the 2004 academic year
Seventh column:	Change in proficiency is shown for the 2007 academic year minus the 2005 academic year
Eighth column:	Change in proficiency is shown for the 2007 academic year minus the 2006 academic year
Ninth column:	The overall improvement calculation is shown. Except as noted in the footnote, “overall improvement” was calculated as the difference between the average of performance in 2006 and 2007 and the average of performance in 2004 and 2005.

Technical Notes and Methodology

Proficiency Gaps (pages 9 and 11)

Measures of gap closures are shown for reading on page 9 and for math on page 11. Two types of comparisons were made when calculating achievement gaps:

Racial/Ethnic Gaps: These compared the performance of African-American and Hispanic students to that of White students.

Income Gaps: These compared the performance of low-income students to that of non-low-income students.

Three types of gaps were measured:

Internal District Gap

This measure calculates the gap in performance between a district's disadvantaged group and the district's advantaged group. Some caution must be exercised in comparing internal gaps across districts because these comparisons may be distorted by the following factors:

- The relative absence of an advantaged group in some districts (e.g., few White or few non-low-income students). To address this issue, internal gaps were not calculated in districts where either of the groups being compared represented less than 5 percent of the district's test-takers in a given subject and at a given level.
- Differences between districts in the composition of the "advantaged" or "disadvantaged" groups (e.g., high-income Whites in one district and moderate-income Whites in another).
- Higher than average performance or improvement by the advantaged group in some districts and lower than average performance or improvement by the advantaged group in others (which could cause districts with lower performing advantaged students to appear to be doing a better job of "closing the gap").
- Ceiling or floor effects, which can distort the comparison of gaps across states.

Gaps are represented by negative numbers and the closing of such gaps is represented by positive numbers. For example, if a district's African-American students perform 30 percentage points below the district's White students, this gap is represented by -30 . If the gap closes to -10 in subsequent years, then the gap closure measure is the later year's gap minus the earlier year's gap (-10 minus -30 equals $+20$), meaning that the African-American—White gap has closed by 20 percentage points.

Changes in gaps are rounded to whole numbers in the district reports. Positive change values appear in color.

Internal District Versus Internal State Gap

This measure corresponds to the district's internal gap minus the state's internal gap. The district's internal gap is defined as the performance of the district's disadvantaged group minus the performance of the district's advan-

Technical Notes and Methodology

tagged group. The state's internal gap is defined as the performance of the state's disadvantaged group minus the performance of the state's advantaged group.

Positive numbers indicate that the district outperformed the state on the measure. For example, if the district's Hispanic students are performing 10 percentage points below the district's White students, but the state's Hispanic students are performing 15 percentage points below the state's White students, then the internal district gap is 5 percentage points smaller than the internal state gap.

By similar reasoning, a positive change in this measure over time for Hispanic students would indicate that the district's Hispanics are improving faster relative to the district's Whites than the state's Hispanics are improving relative to the state's Whites.

External Gap: District Disadvantaged Versus State Advantaged

This measure was used to compare the performance of the district's disadvantaged group with that of the state's advantaged group. Thus, if 30 percent of District A's Hispanic students, 40 percent of District B's Hispanic students, and 50 percent of the state's White students are proficient on the state test, District A's external gap for Hispanics is 30 percent minus 50 percent (or -20 percentage points), and District B's external gap for Hispanics is 40 percent minus 50 percent (or -10 percentage points). Note that comparing two districts' external gaps in the same state is really the same as comparing the performance of their disadvantaged groups.

External gap statistics are generally negative numbers, but improvement in external gaps (improvement in the performance of the district's disadvantaged students relative to the state's advantaged students) are shown as positive numbers.

An illustration of the three achievement gap measures follows:

	2004 Proficiency Rate		2007 Proficiency Rate	
	District	State	District	State
Low-income students	20	25	35	30
Non-low-income students	50	60	55	65

In this example, the gap measures would be:

Internal District Gap

- 2004 internal gap: -30 (equals 20 minus 50)
- 2007 internal gap: -20 (equals 35 minus 55)
- 2004–2007 change in internal gap: +10. This means that the district has closed its income gap by 10 percentage points since 2004.

Technical Notes and Methodology

Internal District Versus Internal State Gap

- 2004 internal state gap: -35 (equals 25 minus 60)
- 2007 internal state gap: -35 (equals 30 minus 65)
- 2004–2007 change in internal state gap: 0. This means that the state’s income gap has not changed since 2004.
- 2004 internal district vs. internal state gap: +5 (equals -30 minus -35)
- 2007 internal district vs. internal state gap: +15 (equals -20 minus -35)
- 2004–2007 change in internal district vs. internal state gap: +10. This means that the district’s low-income gap has improved 10 percentage points more than its state gap since 2004.

External Gap: District Disadvantaged Versus State Advantaged

- 2004 external gap: -40 (equals 20 minus 60)
- 2007 external gap: -30 (equals 35 minus 65)
- 2004–2007 change in external gap: +10. This means that the district’s low-income performance has improved relative to the performance of the state’s non-low-income group by 10 percentage points since 2004.

Important Note Regarding Achievement Gap Data

Caution must be used because the three gap measures are not standardized and are even more vulnerable than are standardized measures to ceiling and floor effects. Data were suppressed if the subgroup being reported at a given level (elementary, middle or high) represented less than 5 percent of the test takers at that level.

The tables also show calculations of improvement over time. Simple change is calculated as the difference between 2004 and 2007, between 2005 and 2007, and between 2006 and 2007. Where data for one or two years in the pair were not available, not comparable, or suppressed, these change calculations could not be performed.

In addition, “overall improvement” was generally calculated as the difference between the average of performance in 2006 and 2007 and the average of performance in 2004 and 2005. Missing data were handled as follows: if data were missing for either year in a pair, data for the other year were used to measure performance; if data were missing for both 2004 and 2005, improvement from 2006 to 2007 was measured; and if data were missing for both 2006 and 2007, no improvement measure was calculated.

Data could be missing either because they were not available (indicated by “—”) or because they were suppressed (indicated by “†”). Data were suppressed if a subgroup represented less than 5 percent of the test takers in a subject at a level (elementary, middle, high school) or if the data were unreliable. Data that were not comparable to other years, due, for example, to changes in the state test as described above, appear in italics and were treated in calculations as missing data (and the missing result is indicated by “‡”). Calculations were performed on unrounded numbers. Positive change values appear in color.

Technical Notes and Methodology

Achievement gaps can close in four possible ways:

Type 1. Both the advantaged group's and the disadvantaged group's proficiencies are increasing. The gap is closing because the disadvantaged group's proficiency is increasing at a faster rate than the advantaged group's proficiency. This is the most desirable type of gap closure.

Type 2. The gap is closing; however, the advantaged group's proficiency is decreasing.

Type 3. Both advantaged and disadvantaged groups' proficiencies are decreasing. The gap is closing because the advantaged group's proficiency is decreasing at a faster rate than the disadvantaged group's proficiency.

Type 4. The number in the internal district vs. internal state change column is positive; however, the gap is not closing. The number is positive because the gaps for both the state and district's disadvantaged groups are increasing, but the gap for the district is increasing at a slower rate.

Type 1 gap closures appear in color.

Reading and Math Proficiency Gaps (pages 9 and 11)

The information in the tables is organized as follows:

First column:	The internal district gap, internal district vs. internal state gap, and external gap are specified with regard to comparing the disadvantaged vs. advantaged groups (African-American vs. White, Hispanic vs. White, and low-income vs. non-low-income students) at each of the three levels (elementary, middle and high school)
Second column:	Gaps are specified for the 2004 academic year
Third column:	Gaps are specified for the 2005 academic year
Fourth column:	Gaps are specified for the 2006 academic year
Fifth column:	Gaps are specified for the 2007 academic year
Sixth column:	Change in the gap is shown for the 2007 academic year minus the 2004 academic year
Seventh column:	Change in the gap is shown for the 2007 academic year minus the 2005 academic year
Eighth column:	Change in the gap is shown for the 2007 academic year minus the 2006 academic year
Ninth column:	The overall improvement calculation is shown. Except as noted in the footnote, "overall improvement" was calculated as the difference between the average of performance in 2006 and 2007 and the average of performance in 2004 and 2005.
Tenth column:	If the gap is closing, indicated by a positive value in the "overall improvement" column, the gap closure type is specified in this column.

Technical Notes and Methodology

Trends in Actual Versus Expected Performance for All Students (pages 12 and 13)

The trends for standardized residuals in reading and math at the elementary, middle and high school levels are shown on pages 12 and 13.

An ordinary least squares regression (OLS) analysis was conducted to determine the extent to which each Broad Prize-eligible district performed better or worse than other districts in its state given the district's percentage of low-income students. Specifically, the dependent variable in the regression analysis was the percentage of test takers in a district in each of the three education level groupings (elementary, middle and high school) who were proficient or above on the state test. The independent variable was the percentage of test takers at each level in the district who were low income. Running the regressions required obtaining achievement data for all districts in the state, as well as data on the income status of test takers. In a few cases where data were available for the state and the eligible district, but were not available for all districts in the state, or where data on the proportion of test takers who were low income were not available, the regressions could not be run.

For each district, the expected or predicted proficiency level based on the regression was calculated. The difference between the district's actual percentage of students who scored at or above proficiency and the predicted or expected value is the residual. A positive residual indicates that the district is performing better than expected on the state test given their percentage of low-income students taking the test, while a negative residual indicates lower-than-expected performance.

A separate regression was run for each year of data and each subject (reading and mathematics) for each level (elementary, middle and high school) within each state. In addition, separate regressions were also conducted for the low-income, African-American and Hispanic subgroups. States generally suppressed test data for small populations, so the results for subgroups may be based on substantially fewer districts than those for "all students," depending on the distribution of disadvantaged students in a state. In addition, where subgroups comprised less than 5 percent of test takers at a level, regression results were suppressed. Hence, subgroup estimates may be less reliable than those for "all students."

It should be emphasized that residuals are relative performance measures. A district's performance was assessed relative to that of other districts in the state, not in absolute terms.

Some states changed tests over the period under review, and tests differed from state to state. Consequently, the interpretation of residuals varies. To allow for year-to-year comparisons, separate regressions for each year of data were run. In addition, in order to have a measure with greater comparability, The Broad Prize methodology uses "standardized residuals." A district's standardized residual is calculated by dividing its residual by the standard deviation of all residuals from the state regression.

Technical Notes and Methodology

As an example, a district in Arkansas may have a residual in elementary reading of 5.7 (meaning that they had 5.7 percent more students reach proficiency than their “expected level” given their district’s poverty). At the same time, a district in Wisconsin may also have a residual of 5.7 in elementary reading. The assessment of how well each district is performing, however, may not be the same even though both have the same residual. If the majority of districts in Arkansas are within 6 percentage points of the expected performance level, while the majority of districts in Wisconsin are within 2 percentage points of the expected level, then the Wisconsin district is performing much better compared to its peers than the Arkansas district is compared to its peers. Standardizing the residuals helps account for differences in variability across states.

Caution must be exercised in comparing standardized residuals. For example, a district that performs above average in a state that ranks below the national average on NAEP may be performing no better than a district that performs below average in a state that ranks above the NAEP national average.

Separate residuals were calculated for each subject (reading and mathematics), level (elementary, middle and high school) and year (2004, 2005, 2006 and 2007). These residuals were averaged across the last two years to produce a current “performance” measure (the average of performance in 2006 and 2007). “Performance” residuals were calculated separately by level (elementary, middle and high school) and subject (reading and mathematics). These “performance” measures are shown on page 12.

Performance Residuals for All Students (page 12)

Six different trend bar charts, with data for 2004, 2005, 2006 and 2007, are shown as follows:

Left side: Reading standardized performance residuals for all students for the elementary, middle and high school levels

Right side: Mathematics standardized performance residuals for all students for the elementary, middle and high school levels

Standardized Residuals Data (page 13)

The standardized residuals values in reading and math at the elementary, middle and high school levels are shown on page 13 for all students, as well as for the African-American, Hispanic and low-income subgroups.

Two columns are also added for “overall performance” and “overall improvement.” “Overall performance” is the average of residuals for 2006 and 2007. “Overall improvement” was generally calculated as the difference between a district’s average performance in 2006 and 2007 and its average performance in 2004 and 2005. If data were missing for either year in a pair, data for the other year were used; if data were missing for both 2004 and 2005, improvement from 2006 to 2007 was measured; and if data were missing for both 2006 and 2007, no improvement measure was calculated.

Positive values for “overall performance” and “overall improvement” are shown in color.

Technical Notes and Methodology

Just as the “performance” residuals are based on relative performance, the “improvement” residuals are based on improvement in relative performance. Thus, a district whose proficiency rates improved, but improved more slowly than those of other districts in the state, could find itself moving upward from year to year more slowly than average. Such a district would show negative relative improvement in this analysis.

The table at the bottom of page 13 shows a summary of the count of positive residuals as well as the count of available residual measures for all students and each subgroup. Positive values are shown in color.

Consider the following when comparing the residuals of different districts:

- The analysis provides information on both performance and improvement. In theory, districts with high performance levels initially might be expected to have lower levels of improvement. A district that performed consistently above expectations during all four years, but did not improve, could still be thought of as consistently high performing.
- Because states use different tests and different standards of proficiency, individual states may be subject to “floor” or “ceiling” effects. If proficiency levels are generally very high in a state (near 90 percent, for example), then high-performing districts may not be able to show their relative achievement because their proficiency level cannot increase above 100 percent. Similarly, if state proficiency levels are very low, then the relative achievement of the higher performers may be understated because the lower performing districts cannot fall below zero percent.

Standardized Residuals Data for Reading and Mathematics (page 13)

The information in the table is organized as follows:

- First column: Standardized residuals in reading and mathematics are specified for the district at each of the three levels (elementary, middle and high school) for all students and for the African-American, Hispanic and low-income student subgroups. Reading is listed first and mathematics is listed below reading. Below mathematics, the table also shows the count of positive residuals and the count of available residual measures for all students and for the African-American, Hispanic and low-income student subgroups.
- Second column: Standardized residuals are specified for the 2004 academic year
- Third column: Standardized residuals are specified for the 2005 academic year
- Fourth column: Standardized residuals are specified for the 2006 academic year
- Fifth column: Standardized residuals are specified for the 2007 academic year
- Sixth column: The overall performance calculation is shown. “Overall performance” is the average of residuals for 2006 and 2007. This calculation does not apply to the counts of positive residuals and available residuals at the bottom of the table, which only count the applicable residuals in the “overall performance” column.

Technical Notes and Methodology

Seventh column: The overall improvement calculation is shown. “Overall improvement” was generally calculated as the difference between the average of performance in 2006 and 2007 and the average of performance in 2004 and 2005. This calculation does not apply to the counts of positive residuals and available residuals at the bottom of the table, which only count the applicable residuals in the “overall improvement” column.

High School Graduation Rates (page 14)

Three different methods were used to calculate high school graduation rates, all of which are considered reliable estimates of graduation rates in the absence of longitudinal student-level data.³ While using longitudinal data generates the most accurate estimates of graduation rates, such information is not currently available in most states. Federal CCD data on enrollments and completions (as described above) were used to generate the graduation rate estimates. While each method uses CCD diploma counts for the graduating class in a given year, the methods rely on different years’ of enrollment data and, therefore, generate somewhat different results. Further descriptions of the individual methods are provided below.

Trend lines as well as specific graduation rates are shown for 2002 through 2005. The table also shows calculations for improvement over time. Simple change is calculated as the difference between 2002 and 2005, between 2003 and 2005, and between 2004 and 2005. Where data for one or two years in the pair were not available, not comparable or suppressed, these change calculations could not be performed. In addition, “overall improvement” was generally calculated as the difference between the average of performance in 2004 and 2005 and the average of performance in 2002 and 2003. Missing data were handled as follows: if data were missing for either year in a pair, data for the other year were used to measure performance; if data were missing for both 2002 and 2003, improvement from 2004 to 2005 was measured; and if data were missing for both 2004 and 2005, no improvement measure was calculated.

Data could be missing either because they were not available (indicated by “—”) or because they were suppressed (indicated by “+”). Graduation rates were suppressed if they were deemed unreliable or if a subgroup represented less than 5 percent of the district enrollment. Diploma counts by race/ethnicity were not available for 2002. Positive change values appear in color.

The three different high school graduation rate methods are:

1. The Averaged Freshman Graduation Rate (AFGR)
2. Urban Institute Graduation Rate (a.k.a. Cumulative Promotion Index or CPI)
3. Manhattan Institute Graduation Rate (a.k.a. Greene’s Graduation Indicator or GGI)

The methodology for each of these is explained briefly below.

³ State education agencies may use different methods to calculate the graduation rates they report for federal accountability purposes; the graduation rates presented here may not match state-published rates. The three methods used for The Broad Prize provide comparable measures across the 100 eligible districts that are located in 38 states and the District of Columbia.

Technical Notes and Methodology

Averaged Freshman Graduation Rate (AFGR)

This method divides the number of students graduating in Year y by an average of the 8th-grade enrollment in Year $y - 4$, 9th-grade enrollment in Year $y - 3$, and 10th-grade enrollment in Year $y - 2$:

$$\text{Graduation Rate} = \frac{G_y}{(S_{8,y-4} + S_{9,y-3} + S_{10,y-2})/3}$$

Where: G = Number of graduates receiving a regular diploma

y = School year

Denominator = Smoothed estimator for first-time 9th-grade enrollment

Urban Institute Graduation Rate (a.k.a. Cumulative Promotion Index or CPI)

This method assumes that graduation is a process composed of three grade-to-grade promotion transitions (nine to 10, 10 to 11, and 11 to 12), in addition to the graduation event (grade 12 to receipt of a diploma). Each of the transitions is calculated as a probability, based on current-year statistics, by dividing the enrollment of the current year by the enrollment of the previous year for the grade in question. These separate probabilities are then multiplied to produce the probability that a student in that school system will graduate.

$$\text{Graduation Rate} = \frac{S_{10,y+1}}{S_{9,y}} * \frac{S_{11,y+1}}{S_{10,y}} * \frac{S_{12,y+1}}{S_{11,y}} * \frac{G_y}{S_{12,y}}$$

Where: S_{grade} = Number of students in a specified grade

y = School year

G = Number of graduates receiving a regular diploma

Manhattan Institute Graduation Rate (a.k.a. Greene's Graduation Indicator or GGI)

This calculation estimates an on-time graduation rate. The number of students who receive a diploma in school year y is divided by an estimate of the number of students in the ninth-grade cohort three years earlier. The estimate of the ninth-grade cohort size is a smoothed estimator that takes into account population changes as students migrate between the public and private sectors between eighth and ninth grades, high ninth-grade enrollments due to higher than average retention in the ninth-grade year, and declining enrollment in 10th grade as students begin dropping out. This denominator is also adjusted for enrollment variability due to student mobility among districts and states rather than dropping out.

Technical Notes and Methodology

$$\text{Graduation Rate} = \frac{G_y}{\left(1 + \frac{(S_{9,y} + S_{10,y} + S_{11,y} + S_{12,y}) - (S_{9,y-3} + S_{10,y-3} + S_{11,y-3} + S_{12,y-3})}{S_{9,y-3} + S_{10,y-3} + S_{11,y-3} + S_{12,y-3}}\right)} * \left(\frac{S_{8,y-4} + S_{9,y-3} + S_{10,y-2}}{3}\right)$$

Where: G = Number of graduates receiving a regular diploma

y = School year

S_{grade} = Number of students in a specified grade

A recent National Center for Education Statistics study reported that when calculating a statewide graduation rate, the Averaged Freshman Graduation Rate came closest to approximating a longitudinal graduation rate. The smaller the district, state or student group being analyzed, the less precisely the three graduation rates estimate the true longitudinal graduation rate. The different methodologies sometimes lead to very different results because each uses different types of data from different years. All three have strengths and weaknesses but are considered acceptable.

Three Estimated High School Graduation Rates: 2002–2005 (page 14)

Three different trend charts, with data for 2002, 2003, 2004 and 2005, are shown for each of the three different graduation rates for all students and for White, African-American, Asian and Hispanic student subgroups.

Estimated high school graduation rates table: 2002–2005 (page 14)

The information in the table is organized as follows:

- First column: The three different graduation rate methods, Averaged Freshmen Graduation Rate, Urban Institute Method and Manhattan Institute Method, are specified for all students and for the African-American, Asian, Hispanic and White student subgroups.
- Second column: Graduation rates are specified for the 2002 academic year
- Third column: Graduation rates are specified for the 2003 academic year
- Fourth column: Graduation rates are specified for the 2004 academic year
- Fifth column: Graduations rate are specified for the 2005 academic year
- Sixth column: Change in the graduation rates is shown for the 2005 academic year minus the 2002 academic year
- Seventh column: Change in the graduation rates is shown for the 2005 academic year minus the 2003 academic year
- Eighth column: Change in the graduation rates is shown for the 2005 academic year minus the 2004 academic year
- Ninth column: The overall improvement calculation is shown. Except as noted in the footnote, “overall improvement” was calculated as the difference between the averaged graduation rate in 2004 and 2005 and the averaged graduation rate in 2002 and 2003.

Technical Notes and Methodology

College Readiness Data (page 15)

District-level measures of the college readiness of their students include SAT, ACT and Advanced Placement. The table provides measures of performance on these tests and participation rates.

The College Board and ACT provided SAT (reading and math) test scores and mean ACT (composite) test scores, respectively, for each district for 2004 through 2007. The SAT reading and math scores were combined to produce mean total SAT scores. Mean ACT composite scores were reported as provided. The College Board also provided the number of AP examinations at each score level (1 to 5) for each district for 2004 through 2007. The percentage of AP tests taken that earned passing scores (3 or above) was calculated. The percent of all AP tests taken with scores of three or above are detailed in this report..

The College Board and ACT do not calculate test participation rates. However, they provided the number of seniors who had taken the SAT and ACT tests (regardless of when they took the test during high school), as well as the number of juniors and seniors who took any AP test in the given year. Participation rates were calculated using these numbers as the numerator and enrollment data for 11th- and 12th-graders from the federal CCD as the denominator.⁴

The tables also show calculations of improvement over time. Simple change is calculated as the difference between 2004 and 2007, between 2005 and 2007, and between 2006 and 2007. Where data for one or two years in the pair were not available or suppressed, these change calculations could not be performed.

In addition, "overall improvement" was generally calculated as the difference between the average of performance in 2006 and 2007 and the average of performance in 2004 and 2005. Missing data were handled as follows: if data were missing for either year in a pair, data for the other year were used to measure performance; if data were missing for both 2004 and 2005, improvement from 2006 to 2007 was measured; and if data were missing for both 2006 and 2007, no improvement measure was calculated. Calculations were performed on unrounded numbers. Positive change values appear in color.

Data were suppressed if they were deemed unreliable. Test scores were suppressed if they were based on the performance of fewer than 15 students, as required by the College Board. Participation rates were suppressed if a subgroup represented less than 5% of enrollment in the relevant grades.

⁴ Participation rates in 2007 were calculated using 2006 CCD enrollments as the denominator, because 2007 enrollment data were not yet available.

Technical Notes and Methodology

Test scores and participation rates on college readiness examinations: 2004–2007 (page 15)

The information in the table is organized as follows:

First column:	The table is divided into the three different college readiness sections: SAT, ACT and Advanced Placement. Each college readiness section first shows performance measures and then participation rates for all students as well as for the African-American, Asian, Hispanic and White student subgroups.
Second column:	Relevant values are listed for the 2004 academic year
Third column:	Relevant values are listed for the 2005 academic year
Fourth column:	Relevant values are listed for the 2006 academic year
Fifth column:	Relevant values are listed for the 2007 academic year
Sixth column:	Change in values is shown for the 2007 academic year minus the 2004 academic year
Seventh column:	Change in values is shown for the 2007 academic year minus the 2005 academic year
Eighth column:	Change in values is shown for the 2007 academic year minus the 2006 academic year
Ninth column:	The overall improvement calculation is shown. Except as noted in the footnote, “overall improvement” was calculated based on the difference between the average in 2006 and 2007 and the average in 2004 and 2005.

Adequate Yearly Progress (AYP) (page 16)

The table shows AYP results for 2005, 2006 and 2007. For each year, the top row shows the percentage of schools in the district meeting AYP targets and the percentage of schools in the state meeting AYP targets. A “Y” or “N” in the second row indicates whether the district as a whole met its AYP target.

The information in the rest of the table is organized as follows:

First column:	The breakdown of AYP results based on proficiency and participation standards in English language arts and in mathematics are specified for the specific student subgroups for which districts and schools are held accountable in the state.
Second column:	AYP results are listed for the 2005 academic year
Third column:	AYP results are listed for the 2006 academic year
Fourth column:	AYP results are listed for the 2007 academic year

If the state AYP results are reported separately at the elementary, middle or high school levels, these are indicated under the year columns.