



New York City Department of Education

**Summary Report on the 2006 Results of
the State Mathematics Assessments
(Grades 3 - 8)**

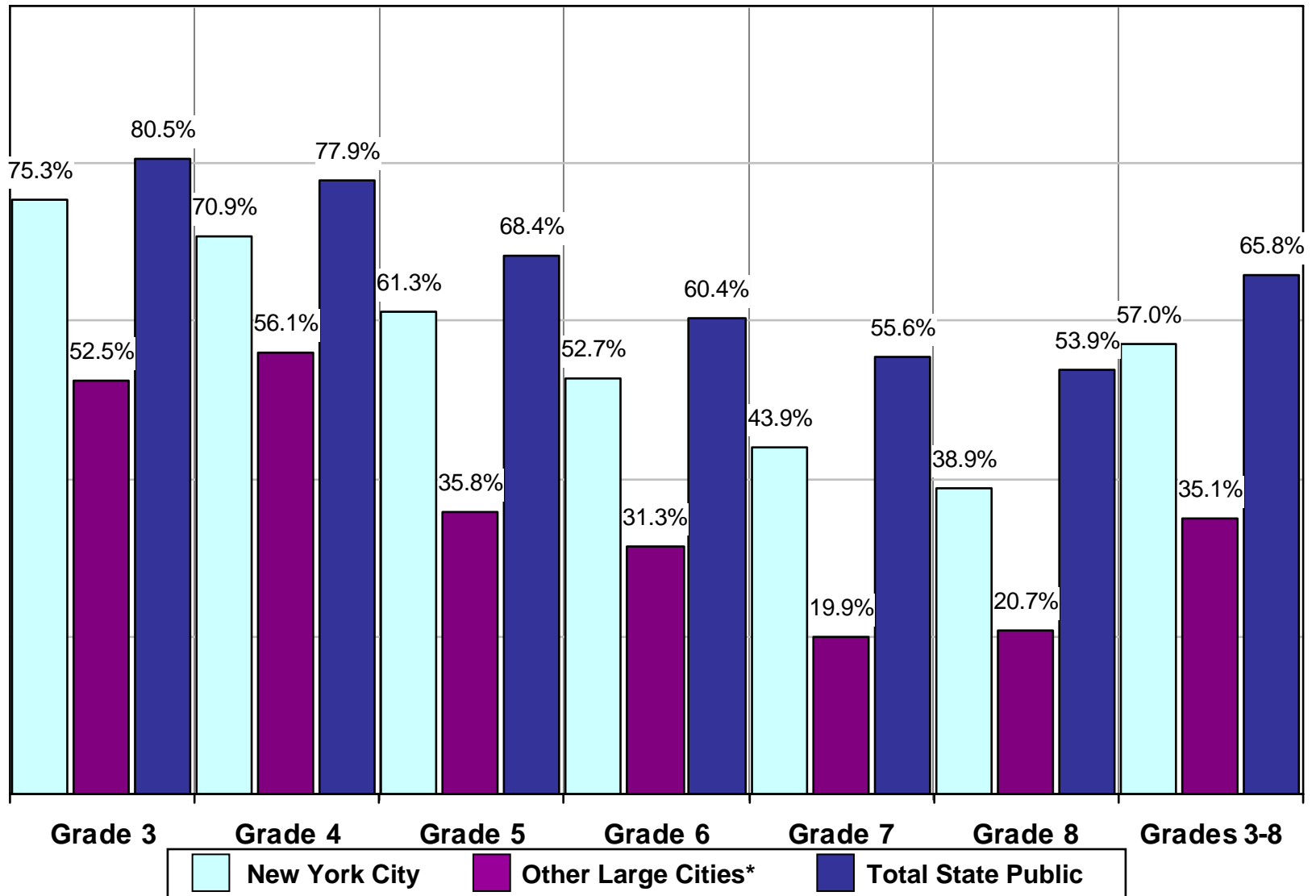
2006 NEW YORK STATE MATHEMATICS

Students in Performance Levels 3 + 4 by Grade

PERCENT
OF STUDENTS
IN
PERFORMANCE
LEVELS

3+4

(All Students)



* Buffalo, Rochester, Syracuse, and Yonkers

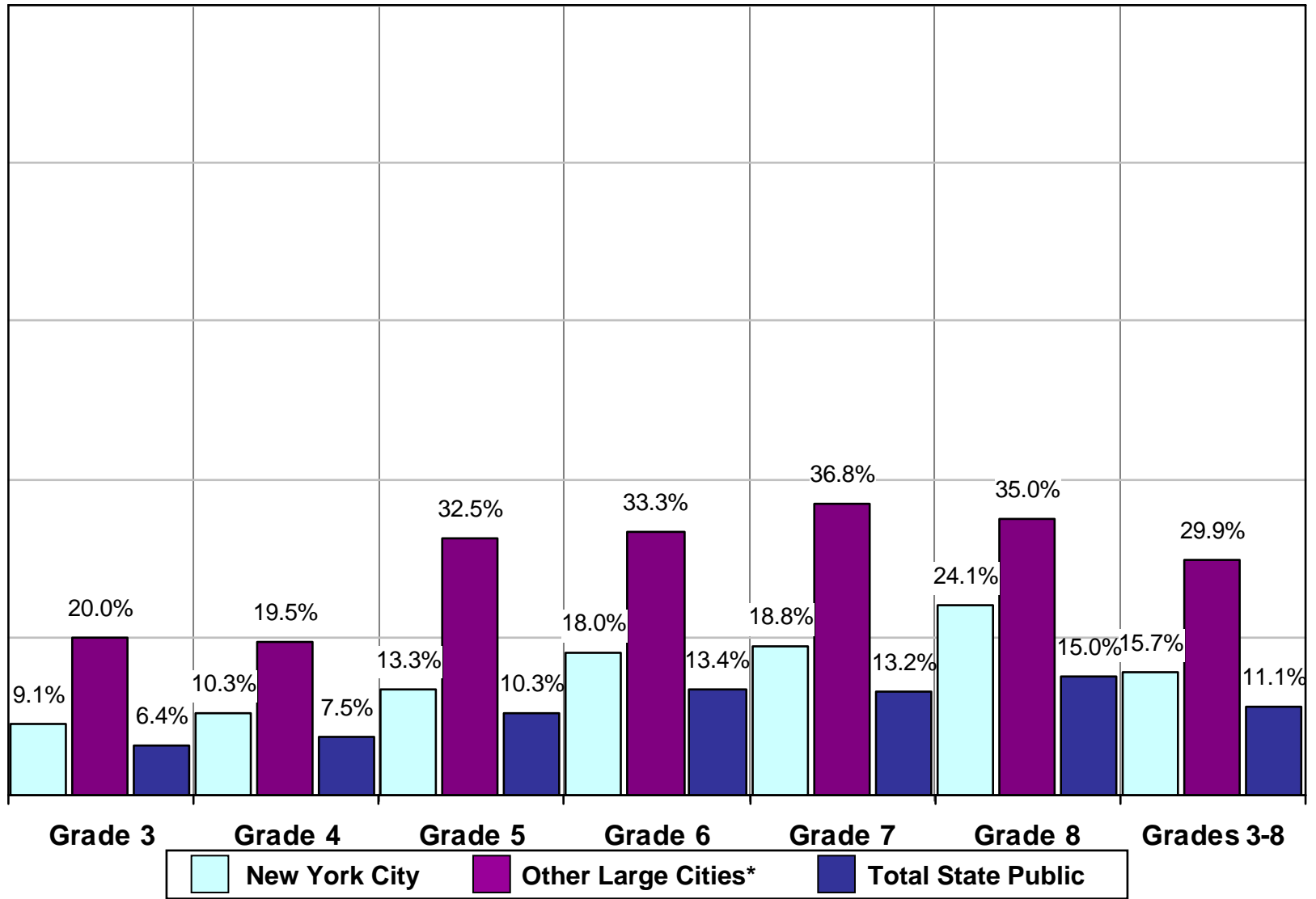
NOTE: In 2005-2006, the New York State Education Department expanded the ELA and mathematics testing programs to Grades 3-8. Previously, state tests were administered in Grades 4 and 8 and citywide tests were administered in Grades 3, 5, 6, and 7.

2006 NEW YORK STATE MATHEMATICS Students in Performance Level 1 by Grade

PERCENT
OF STUDENTS
IN
PERFORMANCE
LEVEL

1

(All Students)

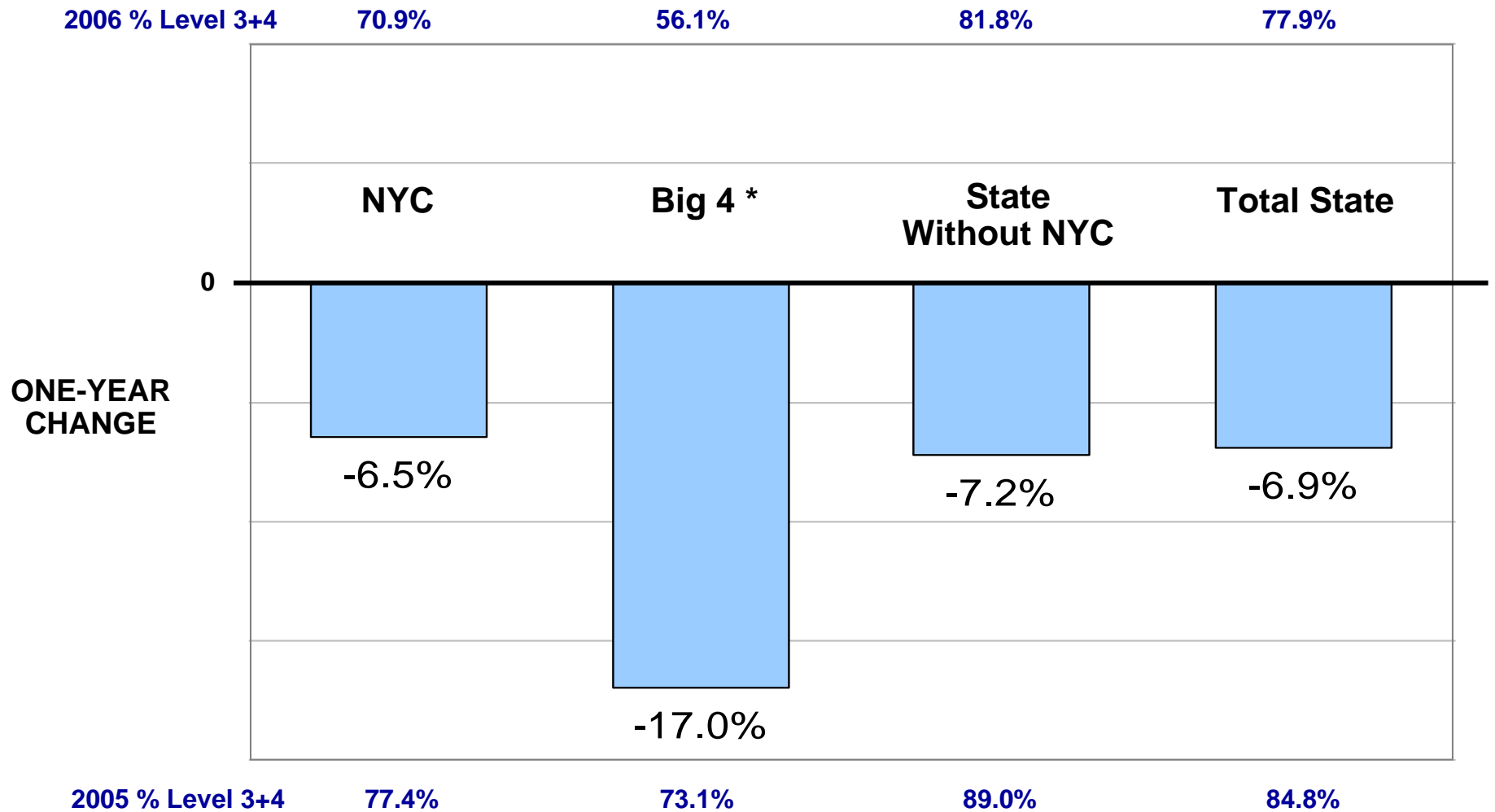


* Buffalo, Rochester, Syracuse, and Yonkers

NOTE: In 2005-2006, the New York State Education Department expanded the ELA and mathematics testing programs to Grades 3-8. Previously, state tests were administered in Grades 4 and 8 and citywide tests were administered in Grades 3, 5, 6, and 7.

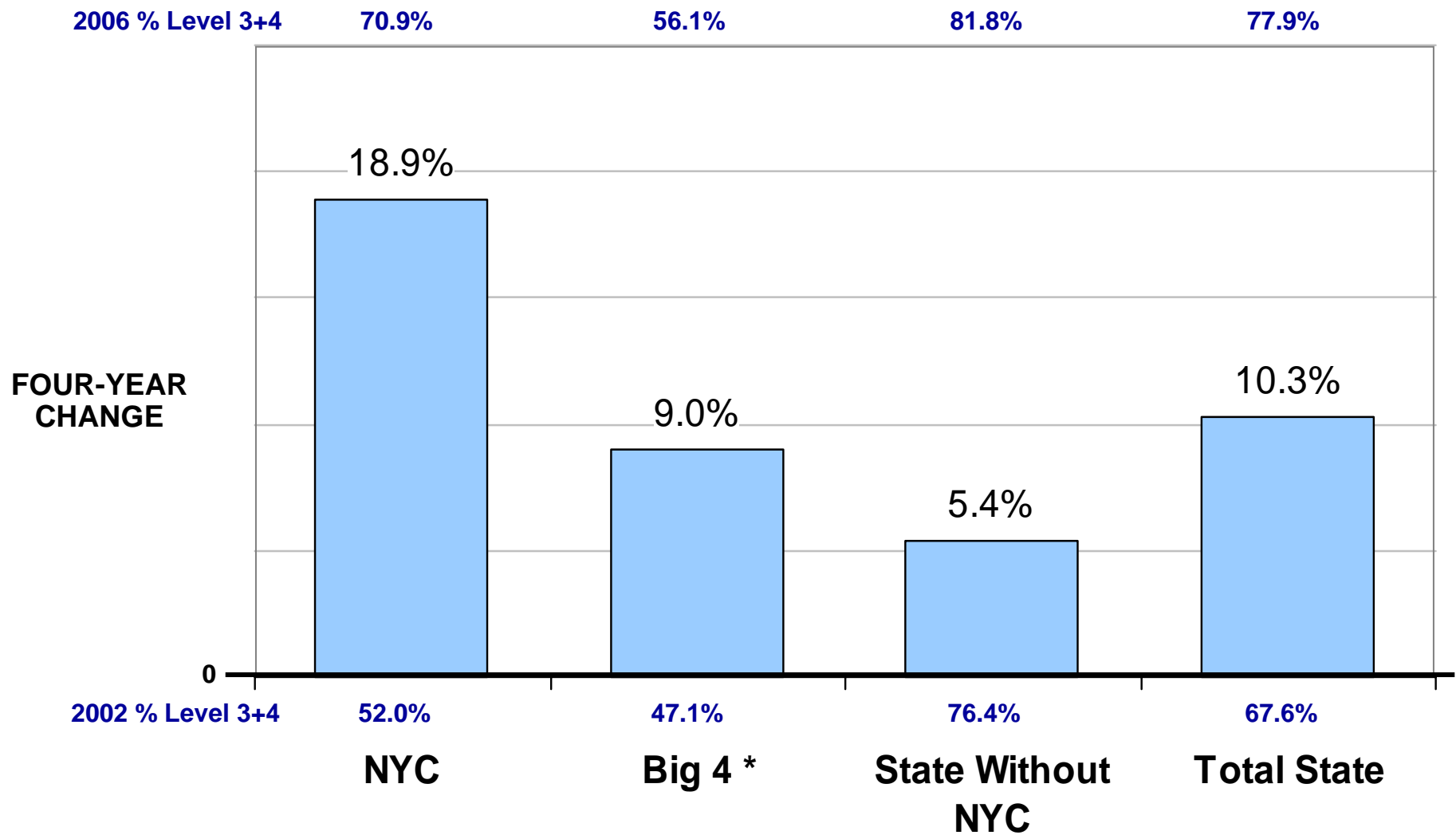
**Results of Grade 4
State Mathematics Assessment**

**NEW YORK STATE
MATHEMATICS
GRADE 4
Performance Change at Levels 3 + 4**



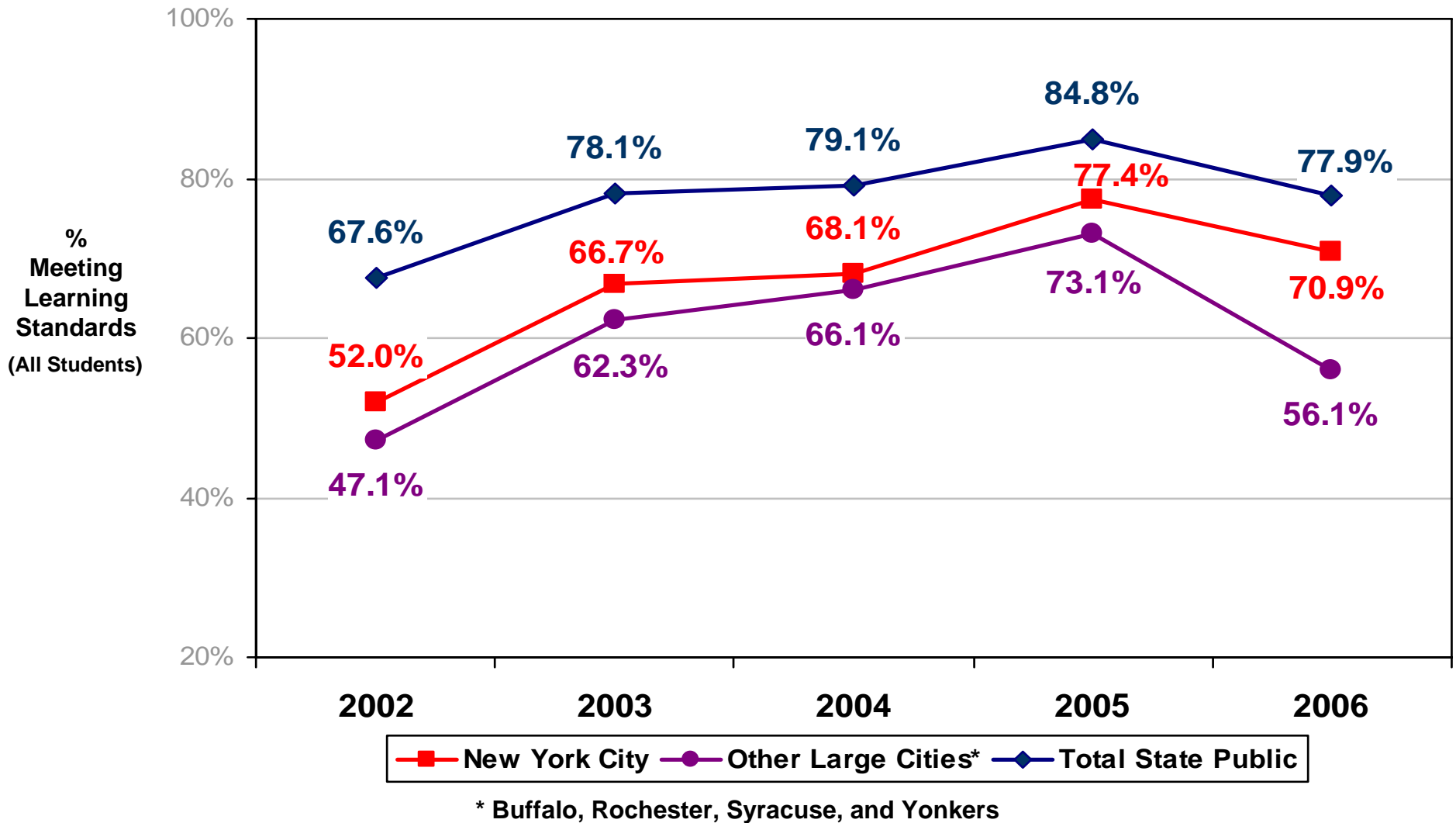
* Buffalo, Rochester, Syracuse, and Yonkers

**NEW YORK STATE
MATHEMATICS
GRADE 4
Performance Change at Levels 3 + 4**



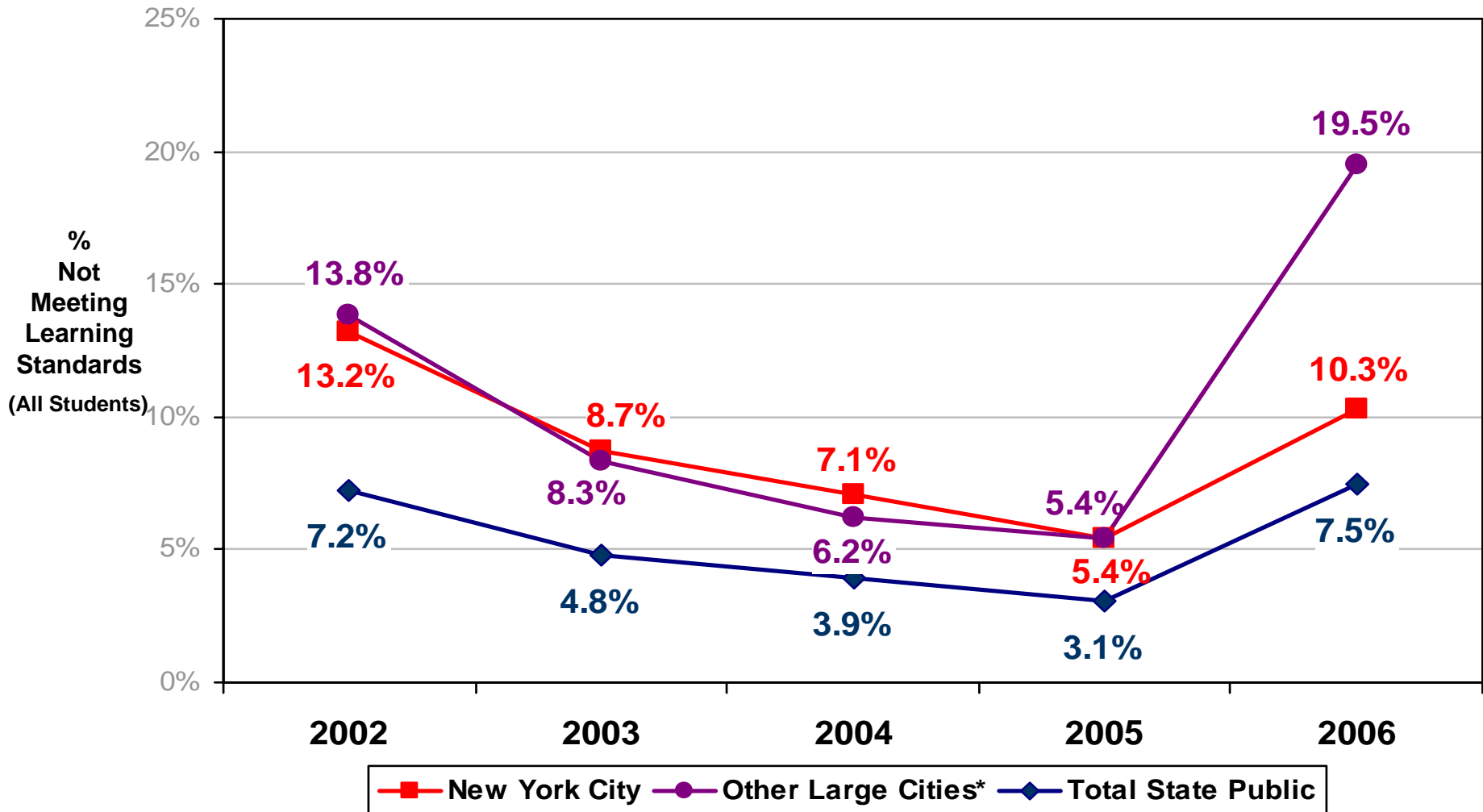
* Buffalo, Rochester, Syracuse, and Yonkers

**2002-2006 MATHEMATICS
NEW YORK CITY, OTHER LARGE CITIES, AND NEW YORK STATE
GRADE 4
Levels 3 + 4**



NOTE: In 2005-2006, the New York State Education Department expanded the ELA and mathematics testing programs to Grades 3-8. Previously, state tests were administered in Grades 4 and 8 and citywide tests were administered in Grades 3, 5, 6, and 7.

2002-2006 MATHEMATICS NEW YORK CITY, OTHER LARGE CITIES, AND NEW YORK STATE GRADE 4 Level 1



* Buffalo, Rochester, Syracuse, and Yonkers

NOTE: In 2005-2006, the New York State Education Department expanded the ELA and mathematics testing programs to Grades 3-8. Previously, state tests were administered in Grades 4 and 8 and citywide tests were administered in Grades 3, 5, 6, and 7.

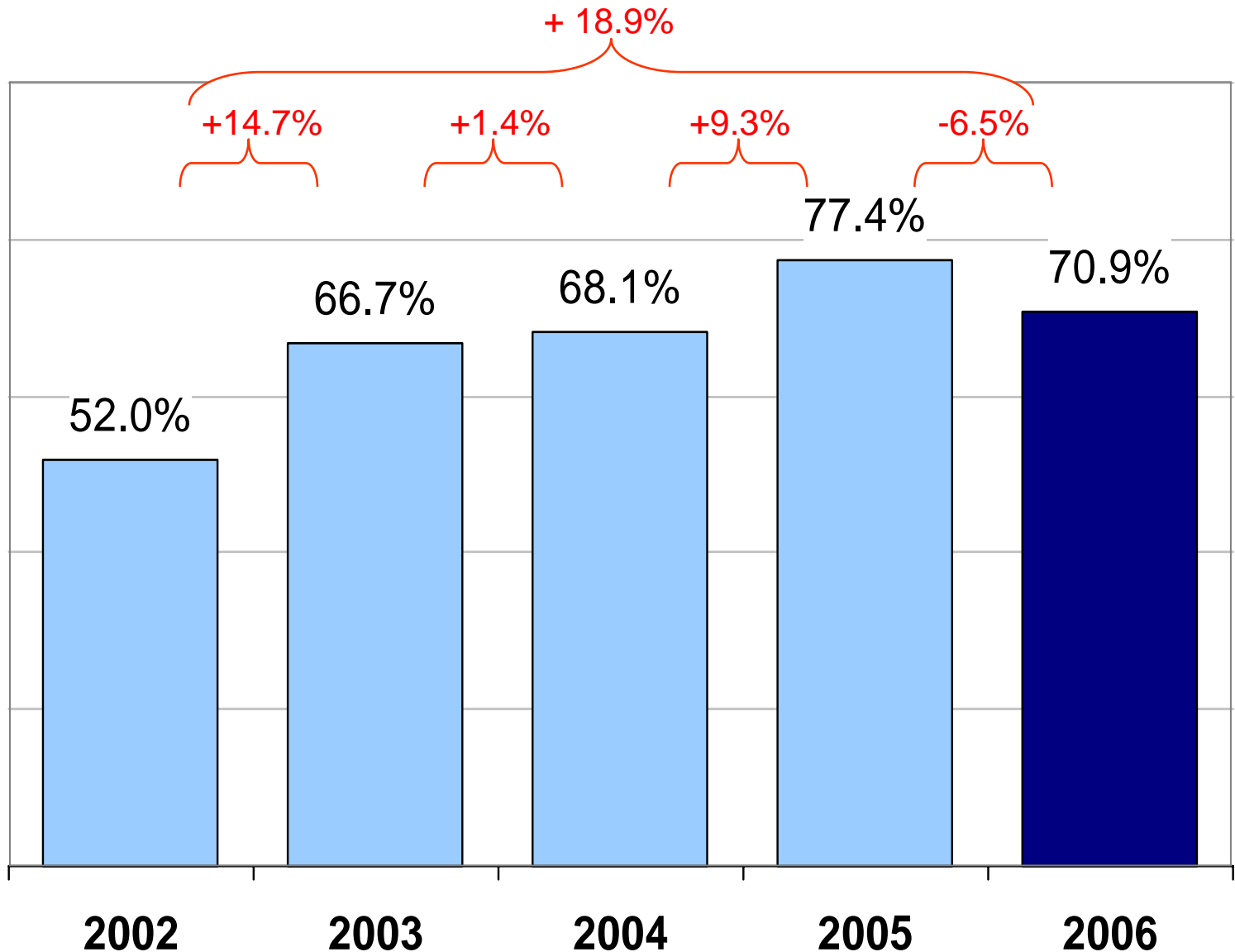
**NEW YORK STATE
MATHEMATICS
GRADE 4
Students in Performance Levels 3 + 4**

PERCENT
OF STUDENTS
IN PERFORMANCE
LEVELS

3+4

**Grade
4**

(All Students)



NOTE: In 2005-2006, the New York State Education Department expanded the ELA and mathematics testing programs to Grades 3-8. Previously, state tests were administered in Grades 4 and 8 and citywide tests were administered in Grades 3, 5, 6, and 7.

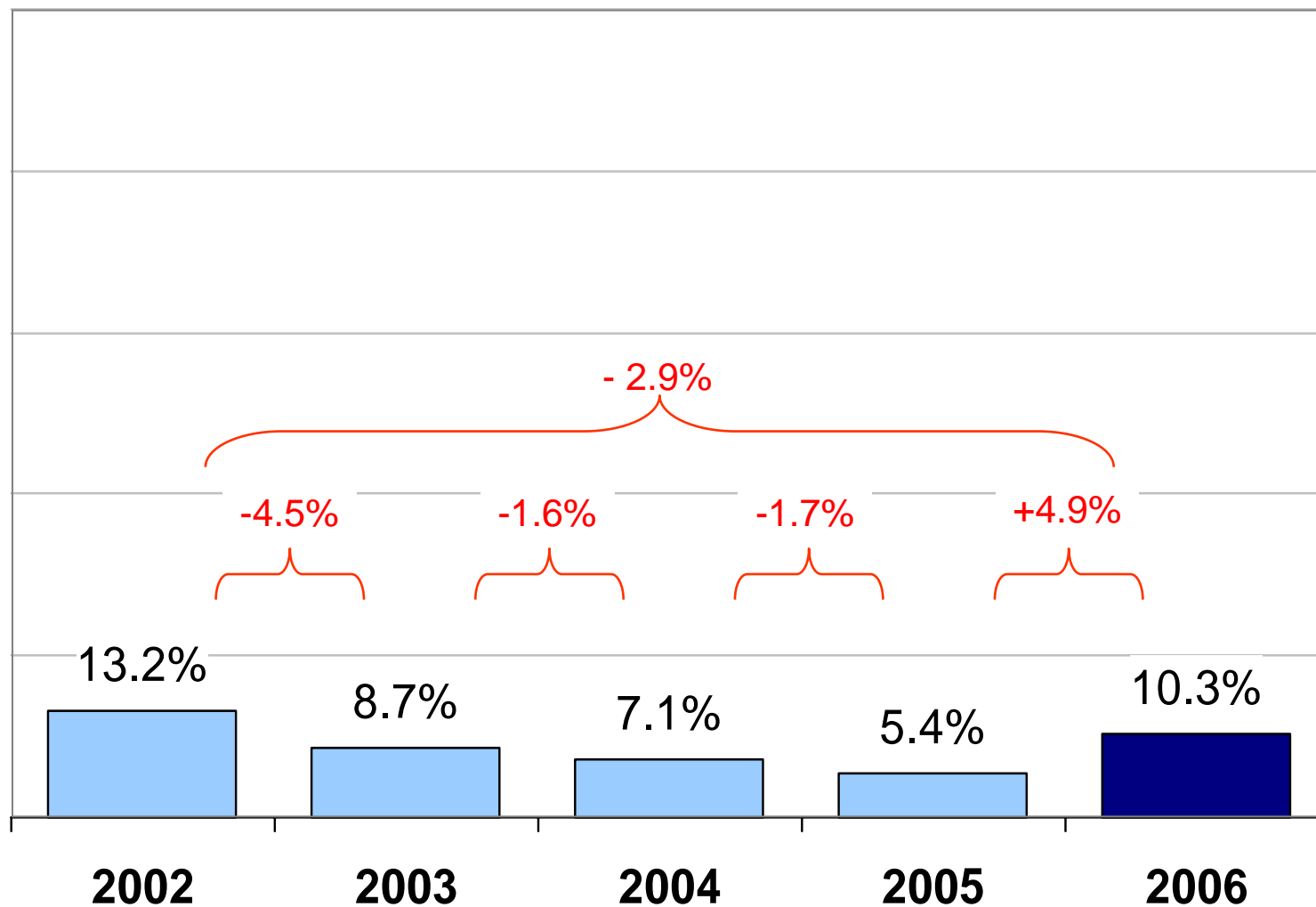
NEW YORK STATE MATHEMATICS GRADE 4 Students in Performance Level 1

PERCENT
OF STUDENTS
IN PERFORMANCE
LEVEL

1

Grade 4

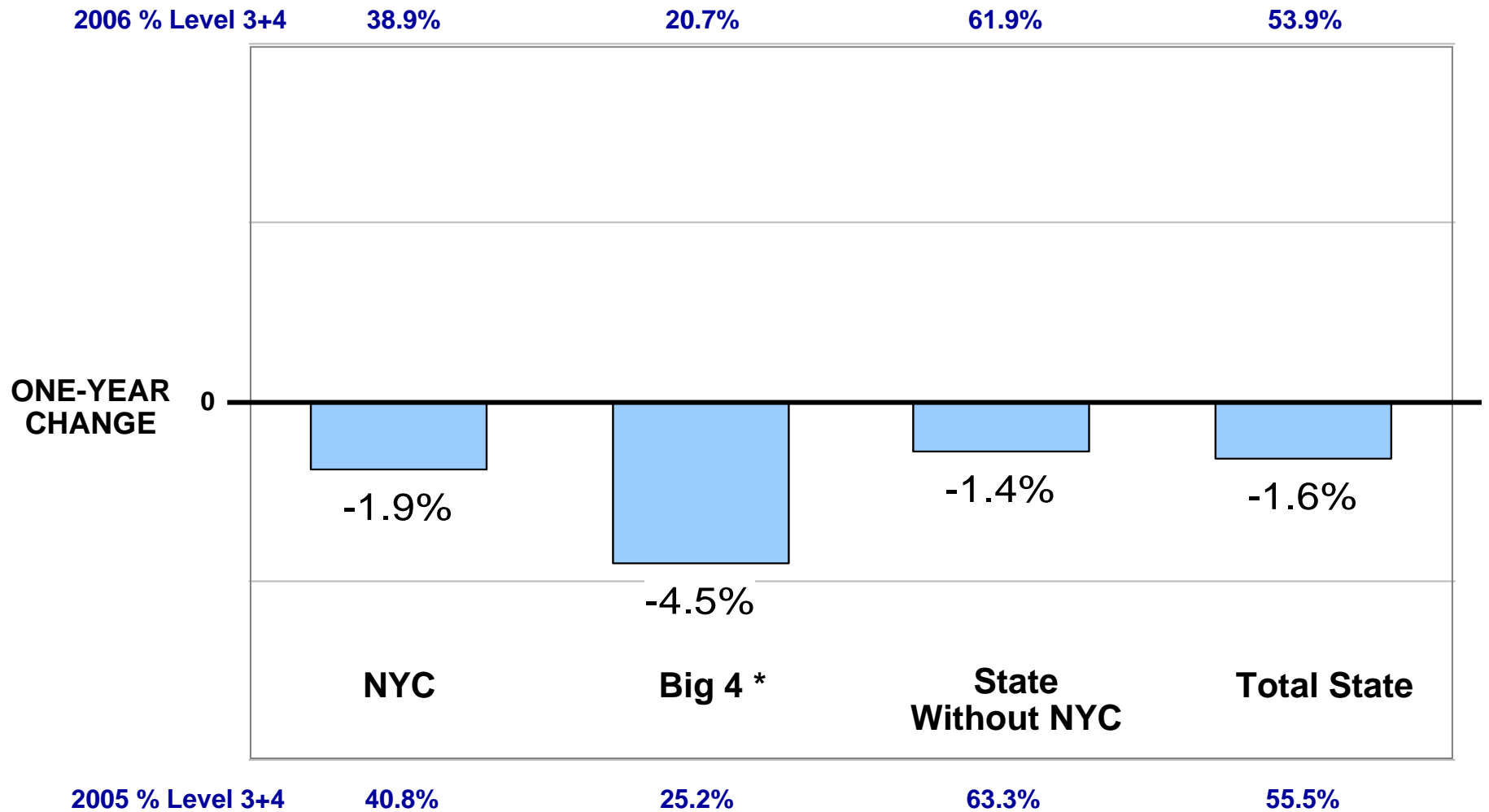
(All Students)



NOTE: In 2005-2006, the New York State Education Department expanded the ELA and mathematics testing programs to Grades 3-8. Previously, state tests were administered in Grades 4 and 8 and citywide tests were administered in Grades 3, 5, 6, and 7.

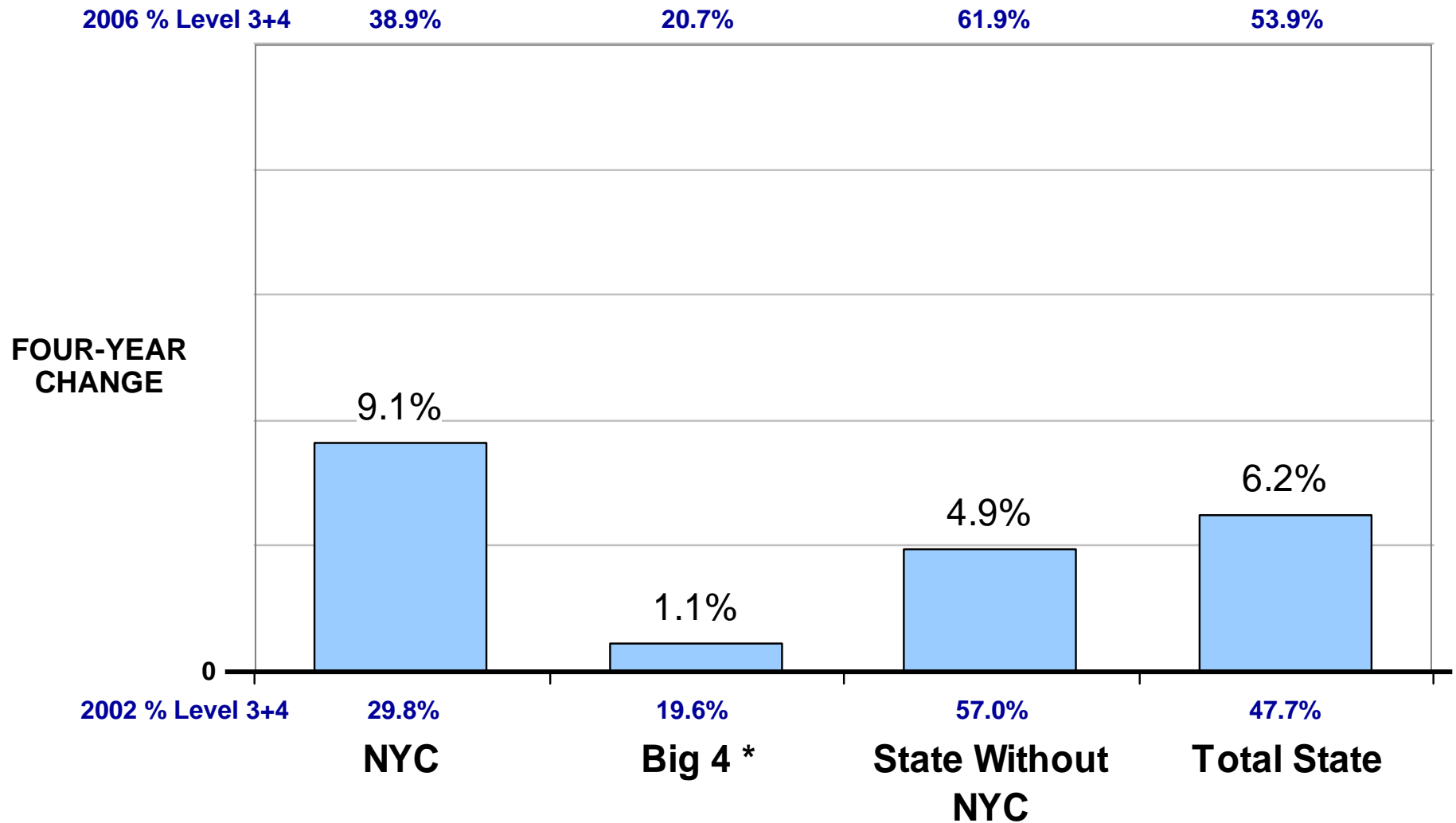
**Results of Grade 8
State Mathematics Assessment**

**NEW YORK STATE
MATHEMATICS
GRADE 8
Performance Change at Levels 3 + 4**



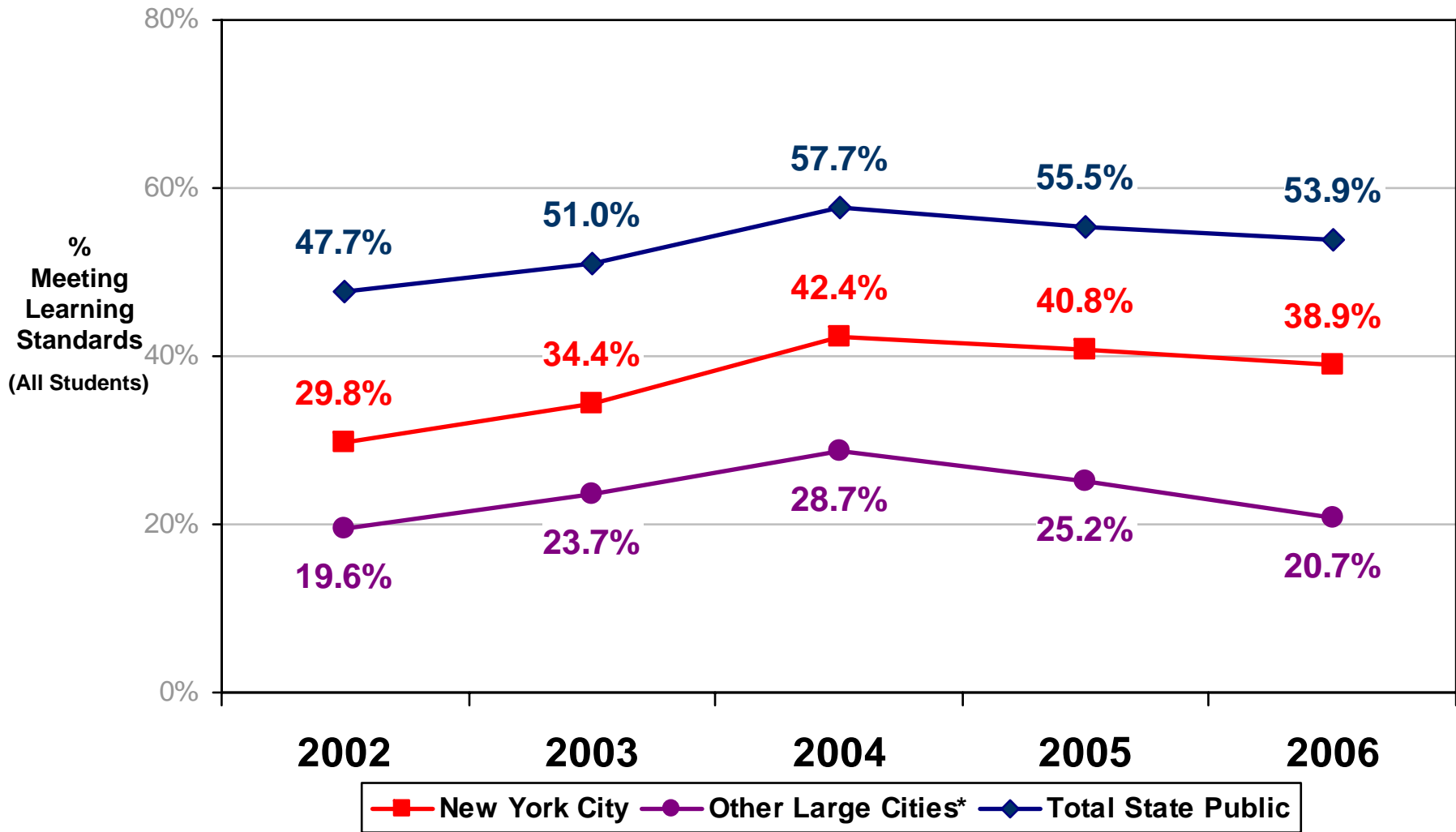
* Buffalo, Rochester, Syracuse, and Yonkers

**NEW YORK STATE
MATHEMATICS
GRADE 8
Performance Change at Levels 3 + 4**



* Buffalo, Rochester, Syracuse, and Yonkers

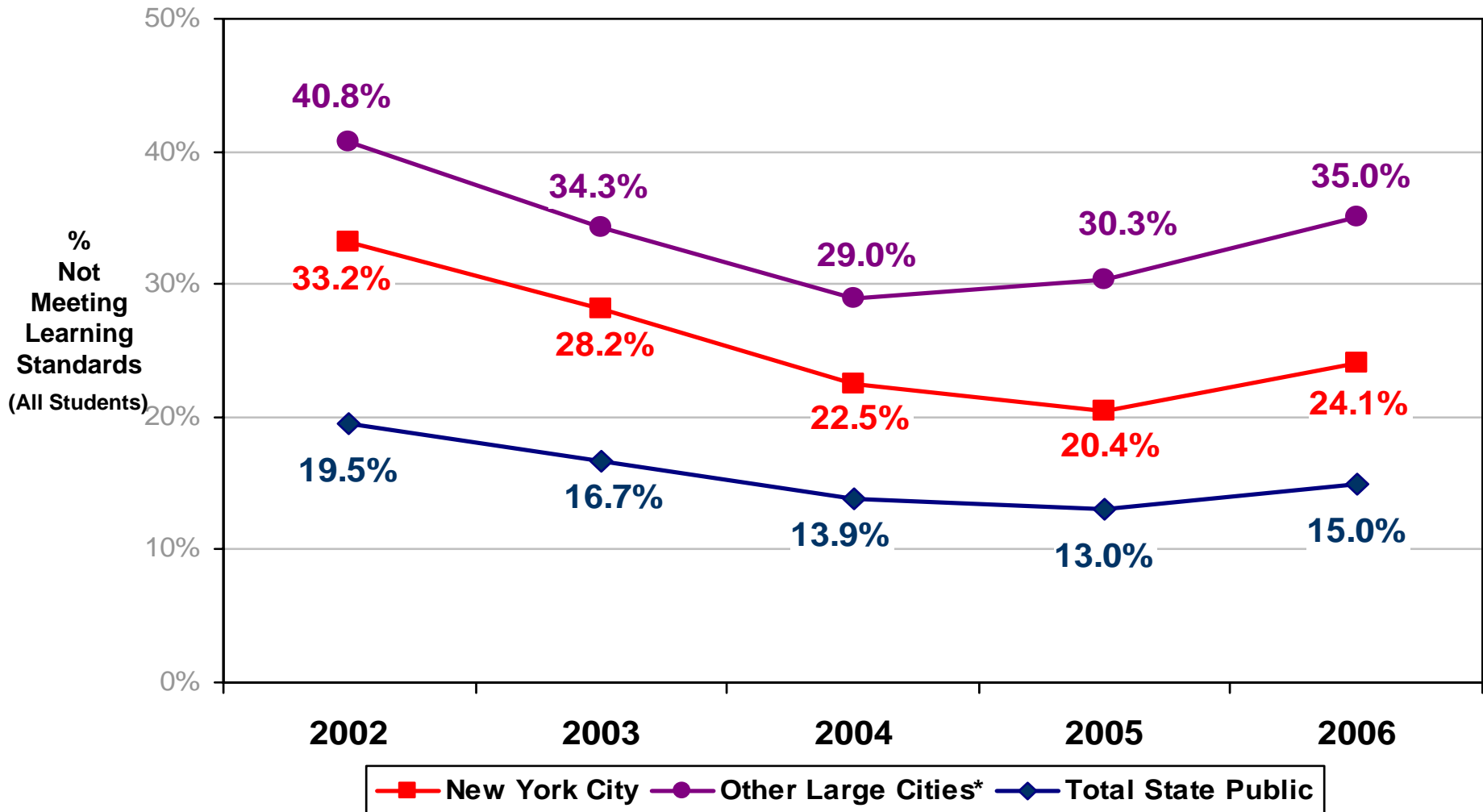
**2002-2006 MATHEMATICS
NEW YORK CITY, OTHER LARGE CITIES, AND NEW YORK STATE
GRADE 8
Levels 3 + 4**



* Buffalo, Rochester, Syracuse, and Yonkers

NOTE: In 2005-2006, the New York State Education Department expanded the ELA and mathematics testing programs to Grades 3-8. Previously, state tests were administered in Grades 4 and 8 and citywide tests were administered in Grades 3, 5, 6, and 7.

2002-2006 MATHEMATICS NEW YORK CITY, OTHER LARGE CITIES, AND NEW YORK STATE GRADE 8 Level 1



* Buffalo, Rochester, Syracuse, and Yonkers

NOTE: In 2005-2006, the New York State Education Department expanded the ELA and mathematics testing programs to Grades 3-8. Previously, state tests were administered in Grades 4 and 8 and citywide tests were administered in Grades 3, 5, 6, and 7.

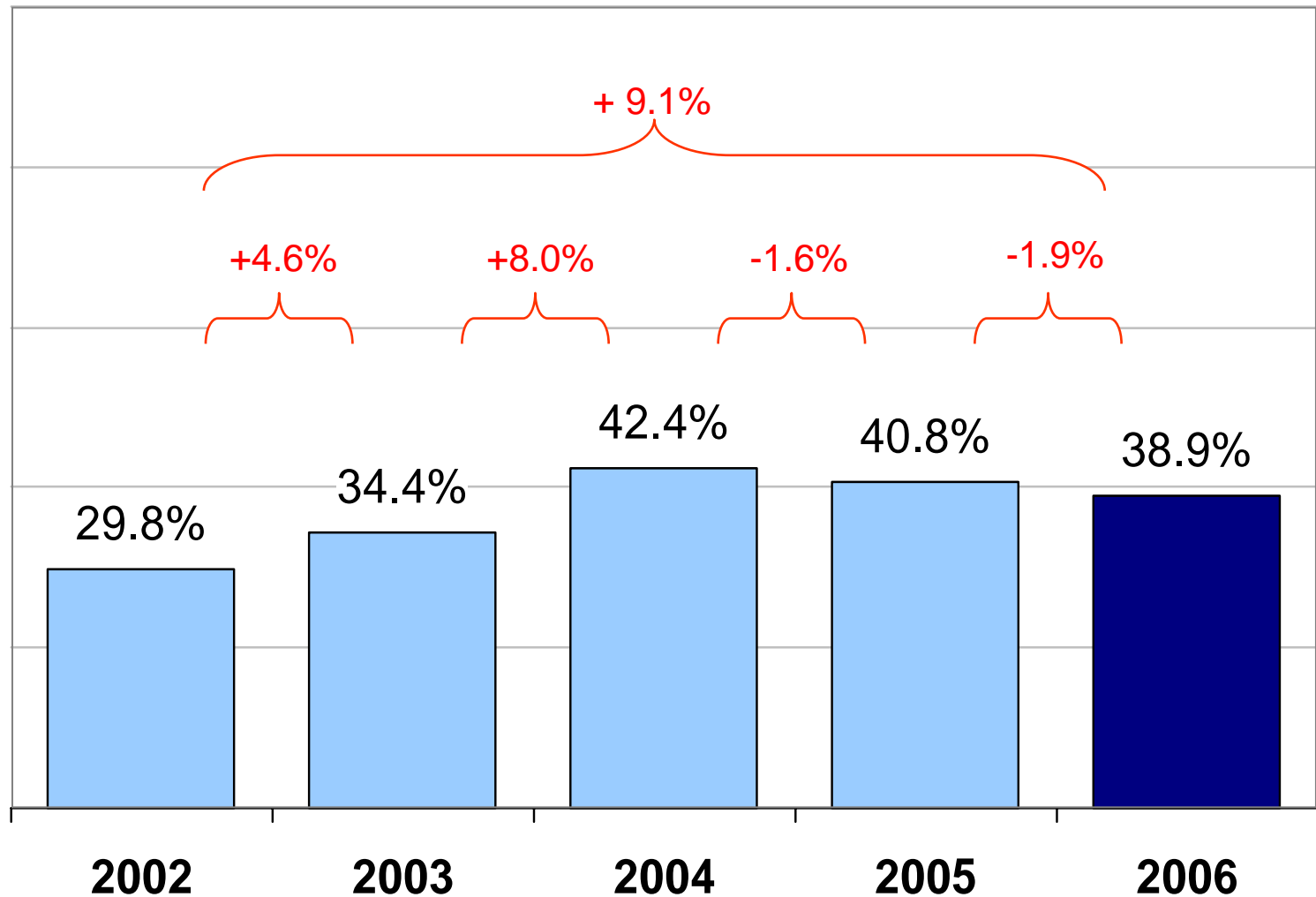
NEW YORK STATE MATHEMATICS GRADE 8 Students in Performance Levels 3 + 4

PERCENT
OF STUDENTS
IN PERFORMANCE
LEVELS

3+4

**Grade
8**

(All Students)



NOTE: In 2005-2006, the New York State Education Department expanded the ELA and mathematics testing programs to Grades 3-8. Previously, state tests were administered in Grades 4 and 8 and citywide tests were administered in Grades 3, 5, 6, and 7.

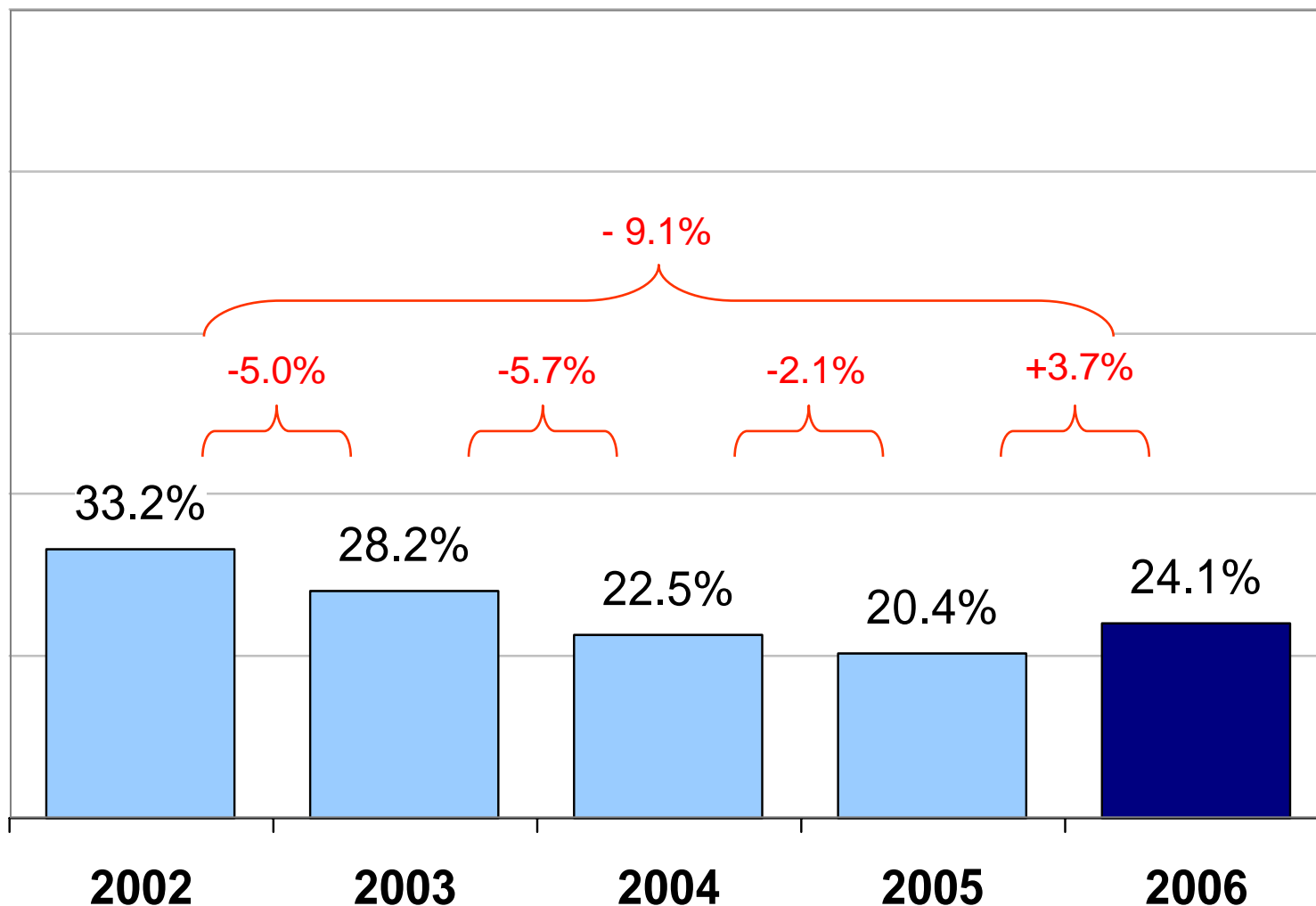
**NEW YORK STATE
MATHEMATICS
GRADE 8
Students in Performance Level 1**

PERCENT
OF STUDENTS
IN PERFORMANCE
LEVEL

1

**Grade
8**

(All Students)



NOTE: In 2005-2006, the New York State Education Department expanded the ELA and mathematics testing programs to Grades 3-8. Previously, state tests were administered in Grades 4 and 8 and citywide tests were administered in Grades 3, 5, 6, and 7.